

Historic, Archive Document

Do not assume content reflects current scientific knowledge, policies, or practices.

62,67

COLE'S 1947

LIBRARY
 RECEIVED
 ★ JAN 24 1947 ★
 U S Department of Agriculture

GUIDE to MODERN GARDENING



← PEACE

Two Grand New All-America Roses

(See page 15)



↓ MIRANDY

600 Acres
 of Everything that's
 Good and Hardy

The
**COLE NURSERY
 CO.**

1881 Painesville, Ohio 1947

Cole Presents ~

YOUR GUIDE TO THE NEWEST AND FINEST HARDY PLANTS

For 1947, we offer a balanced selection of the finest hardy plants. For 66 years, The Cole Nursery Company has taken pride in offering you the best plant material that our long experience can develop. Many lovely gardens throughout this country are composed entirely of plants purchased from The Cole Nursery. Our liberal guarantee policy assures you of garden success.

We will be glad to have you call at any time to inspect our nurseries on West Jackson St., ½ mile north of Route 20 and 2 miles west of Painesville, Ohio.

"Everything That's Good and Hardy"

Our Guarantee

All plants must reach our customers in perfect condition. If there is any doubt as to their health and vigor, please notify us at **AT ONCE**. Also, please notify the shipping agent: postman, expressman or freight agent—**AT ONCE**—showing him the damages. Packages are often delayed in shipping and this is the carrier's responsibility. Claims for damages must be made by the party receiving the plants, promptly. We, however, will not let the customer be the loser and, if notified before 10 days have passed, will replace free of charge any plants not in the best of condition when received, whether or not the delivering agent allows the claim.

We will also replace at one-half (½) the listed price, any plant bought at listed price that fails to grow the season following shipment. Reports must be made before August 1st following planting date.

Plants and other nursery stock sent as ordered, and received in good condition, cannot be returned for credit and we accept no obligation for their return.

Unless you state definitely "NO SUBSTITUTION," we retain the right to send you a similar plant of equal value in place of the variety you order. When substituting, we always endeavor to give the customer the best of the deal.

HOW TO ORDER

PAYMENT in full should be sent with all orders. **No C. O. D. orders accepted.** Send money by recognized safe methods. Unregistered cash sent at your risk.

PACKING. All stock will be packed free, using the most modern methods, assuring perfect arrival.

SHIPPING. We ship at proper planting time. Please add 5% to all orders which you wish shipped by parcel post so that we may prepay them, 10c minimum. The usual material that should be shipped by parcel post includes Roses, Perennials, Vines and Small Fruits. All other material will be sent express charges collect. **WE CANNOT PREPAY MATERIAL ON WHICH THE 5% SHIPPING CHARGES ARE NOT SENT. EXPRESS SHIPMENT OFTEN DELAYS AND ENDANGERS THE LIFE OF SUCH ITEMS AS PERENNIALS, ROSES, VINES AND SMALL FRUITS, SO WE SUGGEST THAT THE 5% FOR PREPAYMENT ACCOMPANY ALL ORDERS FOR THIS TYPE OF MATERIAL.**

ITEMS NOT LISTED

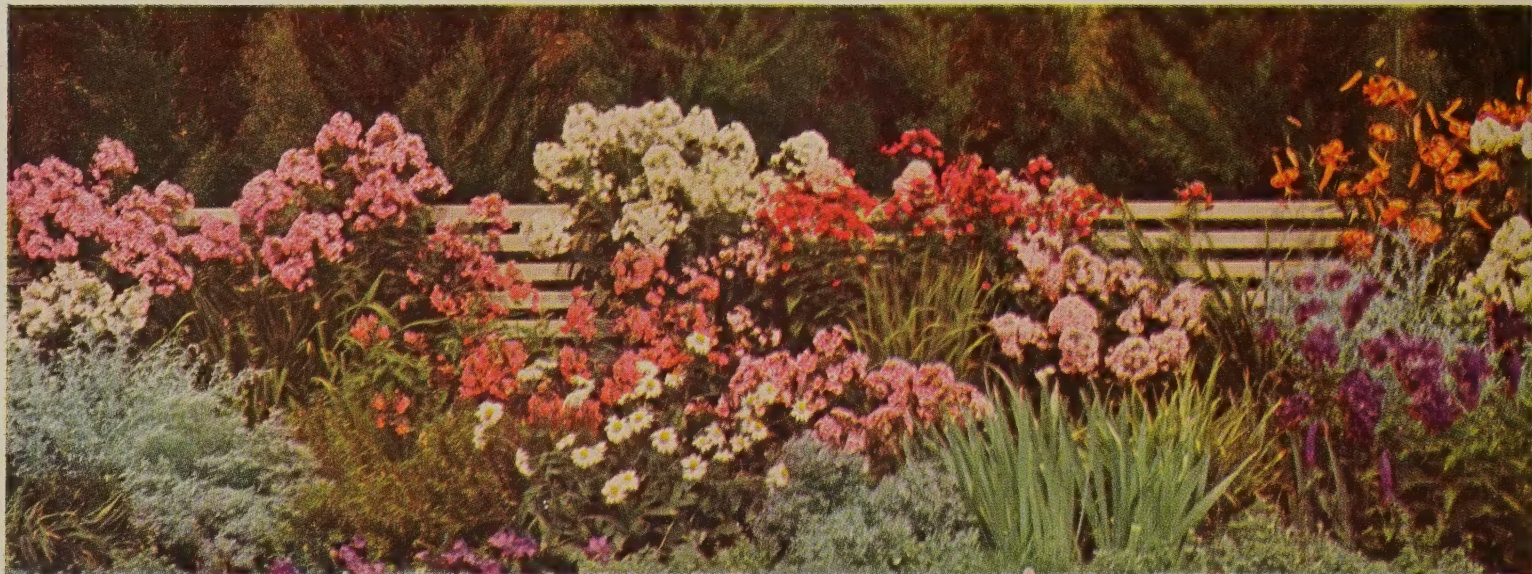
Our large growing stock includes hundreds of popular and worthy items not listed in this catalog. We will be very glad to send you special quotations on receipt of your list. Question on your garden problems will be promptly answered.

PLANTING INSTRUCTIONS

At the head of each division of plant material, you will note a paragraph of "Cultural Hints." If any special treatment over and above this is required, it will be noted in the individual description. We think part of the value of the 1947 Spring Garden Book is in the cultural hints and suggest that you save yours for use throughout the year.

OHIO CUSTOMERS

Please include the usual 3% sales tax with your remittance, except in the case of fruit trees and fruit plants, which are exempt.



A COLE SUPER SPECIAL

Your Complete Perennial Garden

100 of our finest plants selected by us from this garden book. All the colors of the rainbow with tall plants for the background and various heights for other locations. **100 sturdy plants, at least 25 kinds, for \$37.50** (a value of \$50.00 to \$60.00). **200 plants for \$70.00** (a value of \$100.00 to \$120.00). **For smaller gardens—a special of 50 strong plants for \$19.75** (a minimum value of \$25.00).

Cole's HARDY PERENNIALS *(For Spring Planting Only)*

Great variation in color range and flower form, in combination with widely differing growth habits, certainly makes perennials the main-stay of the garden. They will bloom year after year with a minimum of care. In the following pages, we have tried to list the finest of the older kinds and the very cream of the newer ones. We will ship the type of plant we consider best for transplanting, in some cases pot plants and in others field-grown clumps or divisions. Sizes in descriptions indicate height at maturity.

PLANTING AIDS

Never bury hardy perennials, as this will assure their loss. As a rule, they prefer a well drained, loamy soil that is either neutral or slightly alkaline (sweet). Always plant at the depth they have previously grown. Be sure the soil is well prepared. Well-rotted manure or bone meal, well mixed with the soil, is advantageous. Never allow any "commercial" fertilizer to come into direct contact with any part of the plant.

ANEMONE

Hupehensis Superba. A hybrid with the size of Japonica and free blooming habits of Hupehensis. Flowers are a lovely reddish pink outside and deep rose-pink inside. Blooms freely from September to frost. 2 ft.

Queen Charlotte. Enchanting double flowers of La-France-pink, gracefully nodding on 2-foot stems.

Whirlwind. The beautifully formed double, white flowers are borne on sturdy 2-foot stems.

Prices Above Anemones:
50c each; \$1.35 for 3 (of 1 kind)

A COLE SUPER SPECIAL	
1 Each of 3 Beautiful	
Anemones as Listed Above.	
Value \$1.50.	\$1.35



Anemone Hupehensis Superba

GIANT BLUE MOON (Stokes' Aster)

A group of these in the garden or in a bouquet certainly makes a handsome display. The immense, blue, disc-like flowers borne on strong, erect, 12- to 18-inch stems often reach a diameter of 6 inches. They are vigorous and free flowering and will bloom all summer and fall until frost takes its toll. 60c each; \$1.50 for 3; \$4.50 for 10.



ARMERIA (Thrift)

These dainty but sturdy little plants are almost indispensable in the rockery or as an edging for a perennial or shrub border. The lovely, finely cut foliage, which is almost evergreen, bursts forth into a dazzling display of glowing pink flowers during the heavy blooming season and presents a jewel-like fringe during the rest of the summer. Lovely in small bouquets or boutonnieres. 6 to 8 inches. 50c each; \$1.35 for 3; \$4.00 for 10; \$8.00 for 25.

The Best HARDY ASTERS

In late summer and fall the beauty and immense show of flowers produced by these plants is astounding. Highly developed by many years of patient hybridizing, these are lovely for cutting as well as for use in the perennial garden or the front of the shrub border. Many people use them for low hedges as they may be trimmed to shape and will bloom prolifically.

A COLE SUPER SPECIAL	
6 Fall Asters	
1 Each of Those Listed.	
Value \$3.60.	\$3.00

Beechwood Challenger. The closest to a pure crimson-red of any of the Hardy Asters. 2½ ft.

Harrington's Pink. A magnificent display of truly vivid pink flowers. Excellent foliage. 4 ft.

Mount Everest. Pure snow-white blooms produced on these 4-foot plants bring to mind the snowy dome of the mountain after which it is named.

Queen Mary. The unusually pleasing blue-tinted lavender of these 2½-inch flowers on their sturdy branching panicles and the lovely, well shaped plants make this one of our most valuable varieties.

Royal Blue. The color so much desired for cutting and for the garden. A strong grower to 3½ feet, producing enormous quantities of 2½-inch flowers.

Sunset. The beauty of this variety when in bloom is almost beyond description. At the flowering season the plants become almost perfect 2½-foot globes of rosy pink flowers. Here is a color and a plant that eve yone should have.

The Above Hardy Asters:

60c each; \$1.50 for 3 (of 1 kind); \$4.50 for 10 (of 1 kind).



The Finest CAMPANULAS

Double Blue Gardenia. 2½ ft. Extra large, completely double, glistening, china-blue flowers borne on stately, erect stems. Excellent deep green foliage completes a plant that is truly a picture when in bloom. This fully hardy perennial will bloom for years and give a glorious display once it becomes established. A group of these in the background of your garden or as specimen plants facing the shrub border will be something to be proud of. May and June blooming. 75c each; \$2.00 for 3; \$6.00 for 10.

Misty Morn. Another wonderful new creation, exactly like Double Blue Gardenia in that it has the same erect, stately stem, large, double flowers and strong, vigorous foliage, but is a pleasing, frosty lavender-blue color. These two varieties blend beautifully. 75c each; \$2.00 for 3; \$6.00 for 10.

Bluebells of Scotland. The delicate, clear blue flowers with their dainty yellow stamens are borne on slender, willowy stems about 10 to 12 inches high. Be sure to plant some of them for a carpet of lush green foliage. From June to August they are covered with exotic blossoms. Beautiful for planting in crevices, rock walls, rock gardens, and the lowest part of any perennial garden or border. Valuable for use in partial shade, as well as full sun. 50c each; \$1.35 for 3; \$4.00 for 10.

A COLE SUPER SPECIAL

One Each of These Lovely Campanulas
Total of 3 Plants.

Value \$2.00.

\$1.75

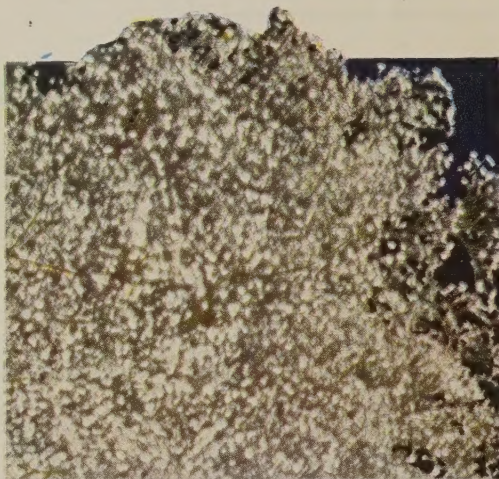


ASTER FRIKARTI

Wonder of Staffa. Exquisite 2½-inch, lavender-blue flowers from June until frost. Long, sturdy stems make it an excellent subject for cutting. 2½ ft. 75c each; \$2.00 for 3.



Campanula, Blue Gardenia



Baby's Breath, Bristol Fairy

BABY'S BREATH

(Gypsophila)

Bristol Fairy. As misty as an angel's breath. Double flowers are pure, fully three times the size of ordinary varieties. Extremely vigorous growth. Three feet high and four feet across. Blooms all summer. 75c each; \$2.00 for 3.

Paniculata. This is the old-fashioned single white Baby's Breath that is so fine for cutting and marvelous in mixed bouquets as well as being excellent for mass planting in the garden. 40c each; \$1.05 for 3; \$2.95 for 10.

BLEEDINGHEART

Eximia (Fringed Bleedingheart). Lovely, rose-pink flowers in drooping racemes. Blooms from early May to August. Will grow in full shade. Excellent for rockeries and borders. Flowers to 15 inches. 50c each; \$1.35 for 3; \$4.00 for 10.

Spectabilis (Old-Fashioned Bleedingheart). An old favorite that becomes more popular each year. Long racemes of truly heart-shaped flowers lend a romantic touch to any garden. The color is a little deeper rose-pink than the fringed Bleedingheart. Grows to 24 inches tall and should be planted 18 to 24 inches apart. Valuable for mass planting. Likes a moist, rich soil and will thrive in either full sun or shade. 65c each; \$1.65 for 3; \$5.00 for 10.

Don't miss our complete perennial garden offer on page 2. It includes several of the plants on this page.



Bleedingheart, Eximia

Cole's Modern Chrysanthemums

LARGE FLOWERING MUMS

60c each; \$1.50 for 3 (of 1 kind)

Eugene A. Wander. Big, brilliant golden yellow. Perfect form. 1½ ft.

Burgundy. Glorious wine-red. Great, double flowers. 2 ft.

Sequoia. Taffy-amber flowers in profusion. 2 ft.

White Doty. The never-changing pure white. 2 ft.

A COLE SUPER SPECIAL

4 Plants—1 Each of the
Above Listed Varieties.

Value \$2.40. **\$1.85**



POMPON MUMS

Compact plants of medium height literally loaded with bright pin-cushion-type flowers. Long stems and large sprays make them the best of all Mums for cutting as well as ideal garden subjects for bedding and for foregrounds of borders.

50c each; \$1.35 for 3 (of 1 kind).

Little Bill. New. Old gold and bronze overcast silver. 1½ ft.

Ruby Pompon. New. Glowing ruby-crimson in rich profusion. 2 ft.

September Bronze. Warm gold-bronze tints of autumn. 1½ ft.

September Cloud. Pure ivory-white with soft primrose shading at center. 1½ ft.

September Gold. Trim, neat mounds of golden yellow flowers. 1½ feet.

Yellow Jewell. Glistening, buttery yellow borne like jewels. 1½ feet.

A COLE SUPER SPECIAL

6 Plants—One Each of the
Above Pompon Mums.

Value \$3.00. **\$2.45**

CUSHION MUMS

Low-growing mounds of profuse bloom. Plants grow 10 to 12 inches high and spread 2 feet or more, and are completely blanketed with hundreds of flowers from September till frost. Use them in masses for effect.

50c each; \$1.35 for 3 (of 1 kind)

Amelia. The famous pink cushion.

Hector. Pure brilliant golden yellow.

King. Coppery bronze to dull red.

Queen. Silvery white.

Bronze-Gold. New. Most brilliant, fluffy mass of golden bronze.

Santa Claus. New, large brilliant red blooms on a broad mound.

A COLE SUPER SPECIAL

6 Plants—One Each of the
Above Superb Varieties.

Value \$3.00. **\$2.45**



White Doty
Sequoia

Burgundy
Eugene A. Wander

A COLE SUPER SPECIAL

*Cole's Justly Famous
"Riot of Color" Chrysanthemum Collection*

1 Each of 6 of Our Finest Chrysanthemums—selected for outstanding color, growth habits, and number of blooms—all individually labeled.

(Value \$3.00.)

Special \$2.00

10 Different (Minimum Value \$5.00)

Special \$3.25



Cushion Mum, Hector



Cole's Giant Lyondel

HYBRID DELPHINIUMS

New - - - Easier to Grow

For 1947 we offer the ultimate in hardy Hybrid Delphiniums. An entirely new creation having all the colors of the latest and most wanted types combined with the size and hardiness of the older varieties. Flowers are 85% or more double and semi-double. Tall stems, 4½ to 5 ft., make this marvelous for cutting and glorious in the garden. These plants will do best in a slightly heavy, peaty soil, which has been made alkaline (sweet) by the addition of lime and plenty of bone meal. 75c each; \$2.00 for 3; \$6.00 for 10.

GIANT PACIFIC DELPHINIUM

Large, double flowers; tall, strong stems. A most marvelous range of colors and color combinations. The plants we offer are one-year-old, but, having been developed on fertile soil, under irrigation, they are as large as many offered at three times the price. Under good conditions, will produce many glorious flower spikes, 3 to 5 feet tall, the first season. Also like an alkaline (sweet) soil with plenty of bone-meal. (Value 50c to 60c each.) Special price, \$1.00 for 4; \$2.25 for 10; \$5.00 for 25.



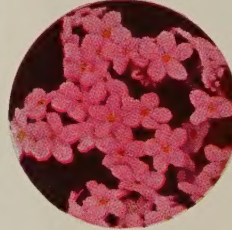
Golden Globeflower

GOLDEN GLOBEFLOWER (Trollius)

Without doubt, the outstanding Globeflower. The most brilliant golden blossoms are borne on strong, wiry, upright stems. The foliage is most attractive. Fine for cutting and excellent for accent in the garden. You will want several of these. 60c each; \$1.50 for 3; \$4.50 for 10.

DIANTHUS, TINY RUBIES

These little plants, developed from the Rose Cushion variety, bear myriads of tiny, fully double, intensely fragrant flowers and are without equal for rock gardens or as edgings. Grows in a perfectly compact little cushion only a few inches high and when seen in a light snow, the evergreen foliage makes it appear as an emerald in a setting of fluffy cotton. A flood of blooms in the May-June blooming period and intermittent bloom the rest of the summer. 60c each; \$1.50 for 3; \$4.50 for 10.



PINK BEAUTY FORGET-ME-NOT

The answer to many years of work by plant hybridizers to develop a truly pink, completely hardy Forget-me-not. This dainty plant is all that can be desired, having a dainty little pink flower in a setting of lovely, light green foliage. Constantly in flower and without doubt the finest thing we have ever seen in the Forget-me-not family. 75c each; \$2.00 for 3; \$5.75 for 10.

DEEP BLUE FORGET-ME-NOT

If these lovely plants never bore a flower, the foliage would repay the efforts of planting and caring for them. The large, leathery leaves are a show the year around and when, during May and June the light blue flowers are borne in many clusters, the plant comes into its full glory. This will do well in either shade or sun. 12 inches. 50c each; \$1.35 for 3; \$4.00 for 10.



GOLDEN DAISIES (Doronicum)

Mme. Mason. 1½ ft. New, fine, large, bright yellow flowers with brilliant orange center discs. The plants are compact and have stiff, long stems that, coupled with the beauty of the flowers, have caused this plant to be chosen as one of the finer cutting subjects. Blends beautifully with Tulips and other early spring bloom. Truly a dazzling specimen. 60c each; \$1.65 for 3.

COLUMBINE

Plant them in partial shade and in soil not too heavy. Columbines blend well with all other plants, and can be used to advantage in any garden location. Grow about 2 feet tall.



Giant Foxgloves

"Star-Lite" Hybrids

A grand new strain of Columbine developed at Cole's. Long-spurred beauties in a gorgeous array of colors and color combinations. All the shades of the rainbow are present in this exquisite mixture. Sturdy plants throw large quantities of mammoth flowers. One of the outstanding modern varieties. 60c each; \$1.50 for 3; \$4.50 for 10; \$9.00 for 25.

Clematis-Flowered. Novel, 1½- to 2-inch flowers of the most beautiful and delicate shades imaginable. Sturdy and completely hardy plants. The many-petaled and spurless flowers resemble the gorgeous blooms of the Hybrid Clematis vines. This treasure among flowers should be in every garden. 65c each; \$1.65 for 3; \$5.00 for 10.

Crimson Star. Lovely, long crimson spurs and flower centers of purest white give a somewhat starlike effect. Quite free flowering. 50c each; \$1.35 for 3; \$4.00 for 10.

GIANT FOXGLOVES

Shirley Hybrids. Flower heads over 3 feet long covered with large, bell-shaped blossoms in a wide range of colors from white to deepest rose. Most of the individual flowers are liberally dotted with contrasting colors. Will often attain a height of 5 feet under ideal conditions and will thrive in light shade or full sun. 45c each; \$1.20 for 3; \$3.50 for 10.



Columbine, Crimson Star

Everblooming Hardy CARNATIONS

Thrill to the glory of having these new greenhouse-type blooms in your own garden. Completely hardy, they require no more care than any of the common perennials. Be sure to cut the blooms for indoor decoration and to keep the new bloom coming on.

Golden Sun. New. Plants produce yellow flowers on 12-inch stems. Very profuse bloomer and makes excellent cut flower.

King of the Blacks. Large, deep mahogany-maroon flowers. When full blown, they seem almost black. Spicy fragrance. A small bunch of these will fill an entire room with their delightful aroma.

Triumph Rose. Quite similar in growth to the above types, bearing a profusion of showy, rose colored flowers which hold exceedingly well when cut. Quite fragrant.

White Lights. What is more glorious than a bouquet of white Carnations? The glistening flowers of this plant last almost indefinitely and are produced in profusion on 12-inch stems.

Prices Above Varieties:

50c each; \$1.35 for 3 (of 1 kind); \$4.00 for 10 (of 1 kind).

Dianthus, Old Spice. (Plant Patent No. 499.) A new everblooming hybrid, rich salmon-pink, to round out a glorious collection. Myriads of well formed, spicily fragrant blooms all summer long. Neat, cushion-like plant. 12 inches. 60c each; \$1.50 for 3; \$4.25 for 10.



A COLE SUPER-SPECIAL

5 Plants—1 Each of These
5 Superior Varieties.

Value \$2.60. **\$2.20**



Geums

GEUM

These are some of the hardiest of all garden flowers. They are neat in habit and have excellent foliage when not in bloom. Their charming flowers on 1½-foot stems are exotic in color and excellent for cutting.

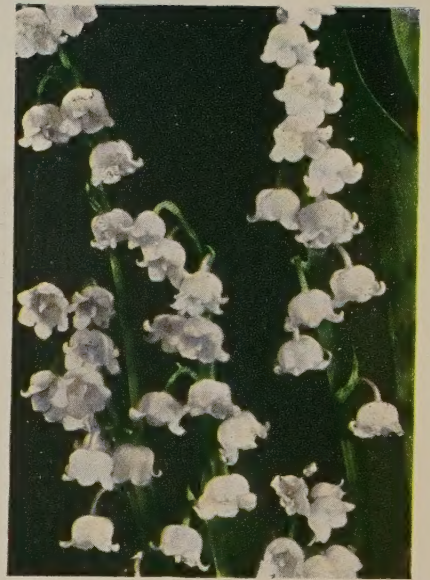
Mrs. Bradshaw. A very fine variety with large, double flowers of fiery orange-red. In bloom practically all summer. 50c each; \$1.35 for 3.

Lady Stratheden. A late introduction of great value. Rich, golden yellow blossoms similar in texture to Mrs. Bradshaw. Excellent for cutting and grace the garden throughout the summer season. 50c each; \$1.35 for 3.

2 of each of the above—4 plants—for \$1.75.

LAVANDULA, BABY PINK

A new pink-flowering hybrid of an old favorite. Lovely, light pink flowers on succulent gray-green foliage in late spring. The dried and crushed leaves emit the lovely lavender fragrance so familiar to all of us. Thrifty, compact growing plants to about 15 inches. 75c each; \$2.00 for 3.



LILY-OF-THE-VALLEY

An excellent strain of this old garden favorite. Larger bells and freer blooming, with the same delicious fragrance. Enjoys full shade. Clumps of 4 to 6 pips, 50c each; \$1.35 for 3; \$4.00 for 10.

Cole's Own Hardy Everblooming Fuchsia

SENORITA



Senorita, offspring of the famed Scarlet Beauty, is even more lovely than this great favorite. Senorita is extremely hardy and grows vigorously. Plants are upright, very compact, with glossy holly-green foliage. The jewelled, pendant blooms, 2 to 3 inches long, are flaming rose-red with a lovely mulberry-purple corolla. Beauty of the bloom is greatly enhanced by the bursting stamens showing bright golden yellow. Flowers abundantly, continuously from late July until frost. Reaches a height in two years of 3 feet and a spread of 2½ feet. Here is a true sensation, so hardy that gardeners even as far north as Maine are raving about it. Strong, 1-year plants, 75c each; \$2.00 for 3.



A COLE SUPER SPECIAL

Shady Spot Perennial Group

A surprise package of at least 10 different varieties, chosen by our experts.

10 Shady Spot Perennials
Minimum Value \$4.50 to \$5.25 **\$3.50**

25 Shady Spot Perennials
Minimum Value \$9.00 to \$11.00 **\$7.50**



RUSSELL LUPINS

The Famous Russell Hybrids. Must be seen to be really appreciated. The enormous, symmetrical flower spikes display all the colors of the rainbow in many rich, contrasting bi-colors and tri-colors. Some of these spikes will attain a height of 3 to 5 feet with flowers along 1½ to 2 or even 3 feet of the stem. The flowers all open at one time, making a glorious display of color. 60c each; \$1.50 for 3; \$4.50 for 10.

GAILLARDIAS — *Most Faithful of All Perennials*

A COLE SUPER SPECIAL

1 Each of 4 Listed Gaillardias
Value \$1.85. **Special \$1.45**

2 Each of 4 Listed Gaillardias
Value \$3.70. **Special \$2.60**

In our plantings a quantity of our very finest Gaillardias have become mixed so that we are unable to separate the various sorts. We offer a special on these mixed Gaillardias—**\$2.50 for 10.**



DOUBLE ROSE CHAMPION

One of the most attractive of the perennials. Beautiful display of rosy pink double flowers on 15-inch stems. A cushion-shaped plant with lovely foliage. A most attractive flower for border or rockery. Fine for massing in the perennial garden. Excellent for cutting. Requires a minimum of care. 60c each; \$1.50 for 3; \$4.50 for 10.

Is a phrase that may be most justly applied to this attractive, but often neglected, group of plants. Always in bloom, easy to grow, fine for cutting, and in mass plantings the most vivid display of colors imaginable. No garden is complete without several groups of Gaillardias. Prefer sun.

Burgundy. 2 ft. A lovely burgundy-red flower of exceeding beauty, occasionally touched with gold. A fine grower, excellent for cutting, and always in bloom. 50c each; \$1.35 for 3.

Dazzler. 2 ft. Aptly named because its maroon flowers, tipped with bright golden yellow, are indeed brilliantly striking. Blooms continuously. 45c each; \$1.20 for 3.

Goblin. 15 inches. A shapely, compact bell covered with hundreds of bright crimson and gold flowers always in bloom. A unique blanket of bloom. 45c each; \$1.20 for 3.

Tangerine. 2 ft. Ample bloom of brilliant tangerine-orange gives a striking effect all season. 45c each; \$1.20 for 3.



Cole's New Double Painted Daisy

Two of the finest of these wonderful early summer flowers. Their masses of saucy, fully crested blooms come on strong, upright stems 2 feet long. May and June. Plant in full sun; water in dry weather.

Miami Queen. The deep rose-pink guard petals surround a center tuft or crest of pastel pink. 15 to 18 inches. Erect, sturdy stems. 75c each; \$2.00 for 3.

Pink Bouquet. The guard petals are a little lighter pink than those on Miami Queen, but the center tuft or crest is of a deeper color. Both of these varieties are profuse bloomers and are lovely in bouquets. 75c each; \$2.00 for 3.



Painted Daisy

Hypericum Olympic Cole's NEW DWARF GOLD FLOWER

In April, a clump of gray-green foliage, in May the coppery bronze buds appear. With June sunshine comes a flood of rich golden yellow, 1½- to 2-inch flowers that defy description. These lovely flowers are set off by old gold stamens and in combination with the gray-green foliage are devastatingly beautiful. Sturdy, 6- to 8-inch stems. The plant is thoroughly hardy and a very heavy bloomer. Will form a dense clump from 15 to 18 inches across by the end of the second season. Everyone will want some of these marvelous new flowers. \$1.00 each; \$2.50 for 3; \$7.50 for 10.

2 Each of the Above Painted Daisies.
SPECIAL \$2.50

MOSS OR CREEPING PHLOX

Dense, mosslike, green foliage with flowers so profuse, they completely cover the plants in April, May and June.

Amoena. One of the best to use for a ground cover. Excellent for border or rockery, also. Grows to a height of about 4 inches and is literally covered with large, bright pink flowers. Likes sun. 50c each; \$1.35 for 3; \$4.00 for 10.

Atropurpurea. Large, rose-red blooms. Moss-green foliage. 45c each; \$1.20 for 3; \$3.50 for 10.

Blue Hill. Showy, pale blue blossoms that repeat in the fall. Medium green, lush foliage. 50c each; \$1.35 for 3; \$4.00 for 10.

Pearl. Pure white. Very compact plant. The old faithful used for years to cover banks, in the rock garden, and in the border. 45c each; \$1.20 for 3; \$3.50 for 10.

Rosea. A rose-pink variety excellent for covering banks, rock gardens and borders. 45c each; \$1.20 for 3; \$3.50 for 10.

Vivid. Brightest of all the Moss Phlox. Shimmering rose-pink. Excellent foliage. 50c each; \$1.35 for 3; \$4.00 for 10.



Creeping Phlox, Vivid

A COLE SUPER SPECIAL

1 Each of the Above 6 Varieties
Value \$2.85. **\$2.25**

2 Each of the Above 6 Varieties
Value \$5.70. **\$4.00**



Sensational Viola
CATHERINE SHARP

The efforts of many plant growers all over this country have been rewarded by this hardy tufted Pansy. The large, violet-blue flowers, centered with rich orange-gold, are borne profusely on sturdy, 3- to 4-inch, upright stems. Will withstand light shade and is not particular as to soil. It is completely hardy and altogether a "must" of the lower growing plants in every perennial garden. 65c each; \$1.65 for 3; \$5.00 for 10.

Large Flowered
PENSTEMONS

Here we offer three sensational varieties of the much-loved southern plant. Hardy as far north as upper New York, but like some winter protection. Their Gloxinia-like flowers are an excellent addition to any garden or perennial border.

Firebird. 20 inches. Enormous, cherry-crimson flowers, touched with white in the throat. Heavy bloomer all summer. Grand for cutting. 60c each; \$1.50 for 3; \$4.50 for 10.

Garnet. 20 inches. Rich, glowing carmine in great masses. A profusion of flowers from June until frost. Beautiful in bouquets. 60c each; \$1.50 for 3; \$4.50 for 10.

Pink Beauty. Lovely, clear shell-pink. Flowers are like Snapdragons and cover the 3-foot stems for a long blooming season in the early summer and intermittently later. A worthy and contrasting companion to Firebird and Garnet. 60c each; \$1.50 for 3; \$4.50 for 10.



Pentstemon, Pink Beauty

A COLE SUPER SPECIAL

3 Penstemons
1 Each of Above.
Value \$1.80. **\$1.50**

SCABIOSA

Fischer's Pincushion Plant

2 ft. A handsome deep blue flower—one of our garden favorites. Gracefully nodding 1½-inch flower heads on the long stems, most desirable for cutting. Strong growing, attractive foliage. 60c each; \$1.50 for 3; \$4.50 for 10.



Scabiosa

Don't miss our complete perennial garden offer on page 2. It includes several of the plants on this page.

COLE'S GIANT HYBRID PRIMROSES

10 to 12 inches. A fine, new, large-flowered strain grown from imported seed. Many unusual and attractive colors including combinations of lilac, pink, coppery red, dark red, yellow, and some even decidedly blue. Husky plants of good quality that will bloom in April and May. Not available in named colors. 50c each; \$1.35 for 3; \$4.00 for 10; \$8.00 for 25.



PHLOX ~ PHLOX ~ PHLOX

For 1947 we offer the finest collection of Hardy Phlox obtainable anywhere. Here is "the most useful of all perennials" at its best. We are constantly rebuilding our Phlox collection, trying to select only those that have the most merit as to flower color, foliage quality, resistance to diseases and pests, and general good growing habits. Some of those chosen are new and some trusty old favorites.

Mass plantings of 10 or more of a color produce a brilliant display; a constant source of pleasure during their long blooming season. We offer strong, field-grown plants sure to bloom this year. Plant 18 inches apart in good garden soil. Well-rotted cow manure will intensify colorings.

RED

Charles Curtis. A fine, strong grower. Its beautiful sunset-red color makes it one of the most brilliant Phlox known. Flower heads heavy with large florets of clear, sparkling, unfading color. 60c each; \$1.50 for 3; \$4.50 for 10.

Leo Schlageter. Brilliant fiery scarlet. Brightest of all in its color class. Heavy, full florets on 3-foot stems. Without a peer among Phlox. 60c each; \$1.50 for 3; \$4.50 for 10.

WHITE

Mary Louise. Unusually large heads of large florals and the translucent white of Carrara marble. A fine, upright grower and heavy bloomer. Excellent for cutting. 60c each; \$1.50 for 3; \$4.50 for 10.

Miss Lingard. Another fine white Phlox constantly in bloom, often until late October. The flower heads show an occasional pink shading that is most attractive. Has a little different type of foliage and is quite free from pests of all kinds. 15 inches. 55c each; \$1.40 for 3; \$4.25 for 10.

Prime Minister. An excellent companion for Mary Louise. This lovely white Phlox, which somewhat resembles Mary Louise, is set off with an attractive vermilion eye. Of excellent growth habits and medium height, with fine foliage. 55c each; \$1.40 for 3; \$4.25 for 10.

PINK AND SALMON-PINK

Annie Laurie. A garden favorite with mammoth trusses of large, rich deep salmon florets. The glowing flowers, on sturdy 2½-foot stems, make it an excellent subject for the border or for mass planting. 55c each; \$1.40 for 3; \$4.25 for 10.

Lillian. A new and probably the finest pink Phlox. Florets are of a soft, cameo-pink color with occasional lavender shadings toward the center and throat. Large flower heads, beautiful, clean foliage, quite disease-resistant. 24 inches. 55c each; \$1.40 for 3; \$4.25 for 10.

Milly von Hoboken. Another lovely, clear pink Phlox. The color is a little deeper than Lillian and it is a little larger grower. Very disease-resistant. 2½ ft. 55c each; \$1.40 for 3; \$4.25 for 10.

Painted Lady. One of the taller growing varieties, approximately 3 feet tall, bearing a multitude of pleasing blooms of a silvery pink with salmon shadings and a cherry-red eye. Outstanding in its color class. 60c each; \$1.50 for 3; \$4.50 for 10.

Salmon Beauty. A rich salmon-pink with a white eye. While there are a number of Phlox that answer this description, we believe that Salmon Beauty is the most outstanding of all varieties in its shade. The plant is sturdy and upright growing. 65c each; \$1.65 for 3; \$5.00 for 10.

BLUE SHADES

Blue Boy. So named for the glorious blue shadings in this lovely soft magenta Phlox. The individual florets are large and borne in good sized clusters. Plants broadly upright to a height of 1½ to 2 feet and the excellent leathery foliage, combined with the unique coloring, make a most useful and needed Phlox in the garden and in bouquets. 60c each; \$1.50 for 3; \$4.50 for 10.

LAVENDER

Caroline Vandenburg. 2 ft. None of the magenta shade usually prevalent among the lavender Phlox. Large, individual florets in huge clusters on erect, sturdy stems. The most attractive of the Phlox and a real addition to your garden. 60c each; \$1.50 for 3; \$4.50 for 10.

PURPLE

Royal Purple. This gloriously outstanding Phlox has no equal in its type. The rich, violet shaded florets are set off by an eye of a much deeper purple. The rich coloring of this Phlox as well as its elegant foliage and good growth habits, make it a necessity in any Phlox planting. You will want several of these. 60c each; \$1.50 for 3; \$4.50 for 10.



Charles Curtis

Mary Louise

Annie Laurie

Royal Purple

A COLE SUPER SPECIAL

1 Each of the 6 Phlox Pictured.

Value \$3.55. **\$2.90**

A COLE SUPER SPECIAL

1 Each of the 13 Varieties of Phlox Listed on This Page.

Value \$7.60. **\$6.35**

Caroline Vandenburg

Leo Schlageter

SHASTA DAISIES

We believe we have to offer, this year, the finest of the many kinds of Shasta Daisies. As you well know, these are good strong growers bearing many flowers fine for cutting. Don't forget the Zinnia-flowered. This is, without doubt, the very finest of the singles.

Esther Reed. 18 inches. Flowers up to four inches across are of the purest white, completely double and fully crested. In bloom constantly from June through October. Invaluable for cutting. 65c each; \$1.65 for 3.

Giant Marconi. Gorgeous, 3½- to 5-inch flowers on sturdy, 2-foot stems. The flowers are very double and frilled. It's our favorite and one of the most satisfactory Shasta Daisies. 75c each; \$2.00 for 3.

Mount Shasta. 2 ft. A new and fine, double Shasta Daisy. A mammoth, beautiful, high-crested, full double of lovely pure white. Guard petals underneath the crest are completely overlapping. Continuous bloom from late spring until frost. Sturdy and erect. 75c each; \$2.00 for 3.

Zinnia-Flowered. This, we believe, is the finest single Shasta Daisy. Flowers are larger and the plants a little stronger growing and more prolific in blossom than the Sensation which it replaces. For our many customers, who prefer the single Shasta, this certainly will be a fine one. 60c each; \$1.50 for 3.

A COLE SUPER SPECIAL

4 Greatest Shasta Daisies
1 Each of the Above.
Value \$2.75. **\$2.35**



Veronica Longifolia Subsessilis

VERONICAS

Longifolia Subsessilis. 2½ ft. A true aristocrat of the garden. For many years these heavy flower spikes, completely covered with masses of rich bloom, have had a place in the finest gardens of the United States. A glorious array of color from August throughout the fall. No new introduction has been seen that could equal or surpass this king of Veronicas. 60c each; \$1.50 for 3; \$4.50 for 10.

Armena. One of the low-growing Veronicas forming a dense mass of lush green foliage surmounted by a profusion of bright blue spires of dainty flowers. The spring flowers are followed by an intermittent bloom throughout the summer. An excellent plant for rock gardens and would be fine for the edge of Rose beds or perennial beds. It will bloom well and grow profusely in a light shade. 50c each; \$1.35 for 3; \$4.00 for 10.

A COLE SUPER SPECIAL

Shady Spot Perennial Group

A surprise package of at least 10 different varieties, chosen by our experts.

10 Shady Spot Perennials
Minimum value \$4.50 to \$5.25 **\$3.50**

25 Shady Spot Perennials
Minimum value \$9.00 to \$11.00 **\$7.50**



Shasta Daisy, Giant Marconi

SWEET VIOLETS

(Viola Odorata)

Prince of Wales. These handsome, sweet scented, deep purple flowers are familiar to all of us. This is not a new variety, but because of its never-ending value, we continue to list it as one of the finest. A never-ending source of enjoyment, particularly in a shady place where other things will not grow. 50c each; \$1.35 for 3.

Rosina. A very choice variety with dainty, rose-pink blooms, deliciously fragrant. A marvelous display in the spring and again in late autumn. Everyone likes this delicate little flower. 60c each; \$1.50 for 3.

Royal Robe. A magnificent violet novelty of breath-taking beauty and size. Exceedingly fragrant blossoms of deep lustrous violet open out flat like a Pansy. Monstrous flowers on stems 10 inches long. Words are not equal to a complete description of their beauty. 60c each; \$1.50 for 3.

A COLE SUPER SPECIAL

3 Plants—1 Each of the
Above Violets
Value \$1.70. **\$1.25**

6 Plants—2 Each of the
Above Violets
Value \$3.40. **\$2.40**

BROADLEAF EVERGREENS

Planting Aids. This entire group of plants much prefers a partly acid soil. Semi-shade and some protection from the high winter winds is highly desirable. Never use lime or bone meal with this group of plants. Plant in the same manner, otherwise, as shrubs.

COLE'S SPECIAL OFFER OF RHODODENDRONS

Carolina. A profuse mass of light, pure pink flowers in June on this lovely, compact, semi-dwarf plant, in combination with its lovely, dark olive-green leaves, makes it most desirable in any planting. Grows to approximately 4 feet. Husky, branched plants, 9 to 12 inches tall, \$1.90 for 2; \$4.25 for 5; \$8.00 for 10.

Catawba. Flaming crimson buds. Gorgeous lavender-pink flowers in huge clusters in late May. Heavy, dense, glossy foliage. Really one of our finest Rhododendrons. Grows to about 6 feet. Strong, healthy plants, 12 to 15 inches tall, \$1.90 for 2; \$4.25 for 5; \$8.00 for 10.

A COLE SUPER SPECIAL

4 Rhododendrons

2 Carolina

2 Catawba

Value \$3.80.

\$3.20

OREGON HOLLYGRAPE (Mahonia)

Fine, Holly-like leaves; shiny, large, metallic looking; bronzy red in autumn. In spring, large clusters of yellow flowers appear, followed by frosty blue fruit in July, which lasts well into the fall. One of the most attractive evergreens and very easy to grow. 12 to 15 inches, \$1.00 each; \$2.50 for 3.

MOUNTAIN LAUREL (Kalmia latifolia)

Of the Rhododendron family, with dense, glossy foliage, and medium light pink flowers in great profusion in May and June. Bushy, shapely plant of medium height. Fine plants, 10 to 12 inches, \$1.90 for 2; \$4.25 for 5; \$8.00 for 10.

ROSE DAPHNE (Garland Flower)

8 to 12 inches. A lovely little evergreen shrub. Who has not seen its lovely pink flowers covering the dark green mound in the spring and again in early fall? Its fragrance is delicious. Can be used in almost any location, but does enjoy sun and a somewhat alkaline (sweet) soil. 6- to 9-inch spread, B&B, \$1.50 each; \$4.00 for 3. 9- to 12-inch spread, B&B, \$2.25 each; \$6.00 for 3.

Cole's Acid Peat Humus Offered Or Back Cover



Rhododendron

Selected GROUND COVERS

Plant these in the bare spots of your lawn where grass just doesn't seem to grow. Put them around trunks of trees and on banks that wash. All are very fast growing and require a minimum of care; fine in deep shade.

Planting Aids. Most ground cover plants should be handled in a manner similar to that used for perennials. Rich, friable soil is always desirable, but the Evergreen Bittersweet and the Myrtles will do well in almost any soil. Pachysandra and Wintergreen both prefer a definitely acid (sour) soil. Spring planting only.

PACHYSANDRA

Terminalis (Spurge). One of the most satisfactory of all ground covers, widely used in shady locations and as a dressing for the foundation planting. Planted under evergreens, the lovely, glossy foliage, with its broad leaves, makes a most fitting contrast to the narrow needles of the evergreen. Can also be used as an edging. Heavy, field-grown plants, \$2.50 for 10; \$5.00 for 25; \$18.00 for 100.

MYRTLE (Vinca)

Minor. A trailing evergreen used widely as a ground cover in shady places. Thrives where other plants refuse to grow. Thick, glossy green leaves with blue flowers. Spreads rapidly. Planted 8 to 10 inches apart will give a good carpet of foliage within a year or two. \$2.00 for 10; \$4.25 for 25; \$14.00 for 100.

Bowles' Variety. A new improved variety having runners that hold their color a little better and leaves of strong texture. The flowers are a little larger and of bright Eleanor blue. Very profuse in early spring with some bloom all summer. Strong plants, \$3.25 for 10; \$6.50 for 25; \$22.00 for 100.

WINTERGREEN

A most attractive ground cover, particularly for use with Broad-Leaved Evergreens and Azaleas. Plentifully dotted with dainty white flowers in the spring. In the late summer these are supplanted by fragrant red berries. Both leaves and berries are edible; in fact, they are the source of the familiar oil of Wintergreen. Put a few clumps of these under your foundation planting, about 1 foot apart. Will grow in sun, but prefer shade or partial shade. 6 inches. Clumps, \$1.20 for 3; \$3.50 for 10; \$7.00 for 25.



Myrtle



Euonymus Radicans Vegetus

EVERGREEN BITTERSWEET (Euonymus)

Radicans (Wintercreeper). A fine, spreading evergreen vine. Very glossy, leaves compactly matting; pink fruit. Great for covering rocky banks, rough walls, tree trunks, etc.

Radicans Colorata (Red-Leaf Wintercreeper). Large, round, glossy leaves and rapid spreading growth, rooting every place it touches the ground. Good for retaining difficult banks or as a low-growing vine, either in sun or partial shade. Dark green foliage turns bronzy red during autumn and in the winter. 9 to 12 in., \$1.65 for 3; \$5.00 for 10. 15 to 18 in., \$2.40 for 3; \$7.00 for 10.

Radicans Vegetus (Big-Leaf Wintercreeper). While this is being classed with and is often used as a ground cover, it is one of the most useful and beautiful broad-leaved ever-

greens of the modern day. It will climb over rock walls, house foundations, stone fences, old tree stumps, or up the sides of trees, and the rich, glossy green leaves are always a show, winter and summer. It is completely hardy and never discolors. The clusters of yellowish white flowers are not large, but quite attractive and are followed in the fall with orange, Bittersweet-like fruit in an excellent display. These persist far into the winter. The plant does not grow rapidly enough to crowd out any others planted around it, but will hold its own in almost any soil or almost any situation—shady, sunny, dry, or moist. May be trained as a shrub by a little judicious clipping. Nice, 2-year plants, \$1.00 each; \$2.70 for 3; \$8.00 for 10.

POLYGONUM

Dwarf Reynoutria. New. One of the finest ground covers. Neat and decorative all year. Becomes established quickly, making a bed that is more like many small shrubs planted close together than a vine. The pleasing green foliage, edged and veined red, turns a brilliant red in the fall. Fragrant, pink sprays of flowers and the even more decorative seed clusters appear in early fall and hang on for a long period. Enjoys a light, sunny position. Grows 4 to 6 inches high. 60c each; \$1.50 for 3; \$4.50 for 10; \$35.00 for 100.

Nature's Draperies

THE VINES



Wisteria



Hall's Honeysuckle

PLANTING AIDS:

Vines require the same planting methods as shrubs. If they are to grow on a building, don't plant too close, 1 foot away is good and 1½ feet is better.

If you wish to train the Wisteria to a tree form, remove side shoots and train the strongest leader to a stake to the desired height. Allow it to branch at the top only. Stake may be removed after a year or two as the plant will then be strong enough to support itself. Old Wisteria plants that do not bloom should be heavily root pruned.

Spring planting only.

BOSTON IVY

The most valuable plant for covering walls of all kinds. Dense, lustrous green foliage becomes a flame in the fall. The blue berries add attractiveness and persist well into the winter. 2-year plants, 90c each; \$2.30 for 3; \$6.50 for 10.

ORIENTAL BITTERSWEET

(*Celastrus*)

One of the finest for winter bouquets. The brilliant orange berries are easily grown on your own plants in your own yard. The superior Oriental Bittersweet which we list is much more certain to fruit and be completely covered with the decorative berries throughout the fall and winter. It is a rapid grower which does well in either sun or shade but fruits much more prolifically in full sunshine. Heavy, field-grown plants, 90c each; \$2.30 for 3; \$6.50 for 10.

GLORIOUS NEW HYBRID WISTERIAS

Lovely new hybrids—long, glorious clusters of dainty, pea-shaped flowers. Long blooming period and usually start to bloom the first year after planting. New varieties may be trained in tree form that will produce large, sturdy trunks. (See Planting Aids.)

Floribunda Rosea. The finest pink Wisteria. Very profuse blooms. Clusters 1½ feet long.

Kyushaku. Translated, this means "nine feet." The lavender flower clusters actually do attain a length of three feet.

Violacea Plena. Double flowers of the deepest color. Dark purple clusters 1½ feet long.

The above in fine,
2-yr., grafted plants:
\$2.00 each; any 3 for \$5.50.



Goldflame Honeysuckle

HONEYSUCKLE

Goldflame. An exquisite variation of an old favorite. The immense, showy clusters of trumpet-shaped buds open into fragrant flower clusters up to 7 inches across. The inside color is a lovely creamy, golden yellow, while the reverse is a brilliant flame-pink. Dark glossy foliage. Can be sheared to a hedge or shrub, despite its natural tendency to vine. Always in bloom from spring until heavy frost. 2-year plants, \$1.00 each; \$2.50 for 3.

Halliana (Hall's Honeysuckle). The old favorite used for so many years as a ground cover, to hide unsightly fences and walls, and to hold steep banks. The evergreen foliage is most attractive and during the summer the fragrant cream colored flowers appear. Excellent for trellises. A universal favorite for many years. Plant 18 inches apart each way. 2-year plants, 60c each; \$1.50 for 3; \$4.00 for 10; \$8.00 for 25.

SILVER LACE VINE

Where quick coverage on a trellis or a screen for a porch or any other location is desired, there is nothing like the Silver Lace Vine. The foliage is a good shade of green to the very end and the fluffy, cream-white flowers are borne in late summer and fall in great sprays. Even the seed pods that follow them are most attractive. Plants will often grow as much as 20 feet in a single year and are quite easily trimmed to keep them from getting out of bounds. 2-year plants, 90c each; \$2.30 for 3; \$6.50 for 10.



Silver Lace Vine

Supreme HYBRID TEA ROSES

We constantly shuffle and re-shuffle our Rose list in an effort to give you the most satisfactory kinds. Each one is thoroughly tested in our nurseries before being offered. If you miss an old favorite in the list, you may be sure that the one replacing it is a definite improvement. As we cannot offer all of the hundreds of varieties, we try to have the best.

NEW PATENTED KINDS

HYBRID TEA ROSE, MIRANDY. All-America Selection. (Plant Patent No. 632.) Illustrated on front cover. Deep red flowers, having the texture and pile of good velvet and a delicious spicy fragrance, borne on long, sturdy stems. The large ovoid buds open to fully double, many-petaled flowers that are fine for cutting, lasting much longer than average indoors. The foliage is heavy, leathery, durable, and of a lustrous dark green which does not fade. The plant is upright, vigorous, and free blooming. Altogether, this is the finest Rose we have seen. We highly recommend it. \$2.50 each; \$6.25 for 3.

HYBRID TEA ROSE PEACE. All-America Selection. (Plant Patent No. 591.) Illustrated on front cover. As outstanding in its color class and Mirandy's equal in every way, having the same lustrous heavy foliage, strong, sturdy, long stems and gorgeous blooms that hold their freshness right up to the time the petals drop. The bud is a rich, golden yellow with pink-edged petals. As the flowers open, the pink seems to deepen, then as they come to their full high-crowned glory, the golden color fades first to an attractive ivory, then to an alabaster white and the pink blush spreads and deepens along the edge of the individual petals. The plants produce many flowers at once and they can be seen in all stages. The whole effect is of several gorgeously different Roses on one plant. \$2.50 each; \$6.25 for 3.

Apricot Queen. (Plant Patent No. 464.) Another new All-America variety and a real winner. A profusion of medium sized, dainty, clear apricot color buds is borne on slender, sturdy stems. Open flowers show a lighter shade of their pure apricot color. Beautiful from the time the buds start until the petals drop. A bushy grower, always in blossom, even in the hottest weather. Fine for cutting. \$1.75 each; \$4.50 for 3.

Crimson Glory. (Plant Patent No. 150.) Considered by most people the outstanding red Rose. Large, double, deep red flowers borne in huge quantities on this free-branching bush. The fragrance is delicious. \$1.75 each; \$4.50 for 3.

Grand Duchess Charlotte. (Propagation Rights Reserved.) All-America. A new shade of red seen only in time-mellowed tapestries. A color hitherto unknown in Roses. Beautiful, long, stream-lined buds are rich claret color and open to firm-petaled blooms that gradually change to a lovely begonia-rose. Delicately fragrant. \$1.75 each; \$4.50 for 3.

Mary Margaret McBride. (Plant Patent No. 537.) All-America. The perfect form of this lovely coral-pink Rose, from the tight bud stage until the petals drop, is outstanding. A gold suffusion at the base of the petals. A never-fading beauty that should be in every Rose lover's garden. \$1.75 each; \$4.50 for 3.

McGredy's Sunset. (Plant Patent No. 317.) Just to see the clear golden yellow, with scarlet suffusion, of this beautiful Rose in hot summer weather when most yellow Roses are changing to a rather faded white is the highest recommendation. The color combination grows on you as the bloom expands. Highly fragrant flowers in clusters of dark green foliage. \$1.75 each; \$4.50 for 3.

A Cole Super Special

One Each of the Above Glorious New Patented Roses
7 plants—Cole's superb top grade—A \$13.75 value.

Special \$11.75

CULTURAL HINTS

Always dig the hole too large. Be sure of good drainage. Plant so that the graft joint is just below the ground. Spread the roots well and tamp soil firmly around them. Cut back tops to 4 to 6 inches and cover entire plant with moist soil. Remove this covering when plants start to show growth (about 10 days.) Repeat covering process in late fall for winter protection and best results. Prune more than you want to or think necessary.



Grand
Duchess
Charlotte



Apricot Queen
Crimson Glory



DREAM COLLECTION

The 5 Roses pictured on this page. SUPERB TOP GRADE \$6.25

- ① Editor McFarland. Deep pink. Sturdy grower.
- ② Duquesa de Penaranda. Lovely apricot and yellow multi-color.
- ③ Christopher Stone. One of the finest of the bright reds.
- ④ Sister Therese. Excellent yellow with orange shading on reverse.
- ⑤ McGredy's Ivory. Beautifully formed ivory-white.

Prices Above Varieties:
\$1.50 each; \$3.75 for any three of your selection.



FANTASY COLLECTION

The 5 Roses pictured on this page. SUPERB TOP GRADE \$6.25

- ⑥ Golden Sastago. Clear, never fading yellow.
- ⑦ Pink Dawn. One of the finest pinks.
- ⑧ Poinsettia. Rich red. Free blooming, strong growing.
- ⑨ Condesa de Sastago. The finest of the multi-colored Roses.
- ⑩ Caledonia. Excellent, creamy white. Sturdy plants.

Prices Above Varieties:
\$1.50 each; \$3.75 for any three of your selection.



Hardy Climbing Roses

SELECTED FOR THEIR HARDINESS AND ABUNDANCE OF BLOOM



Flash



Dr. J. H. Nicolas

Blaze. (Plant Patent No. 10.) Very double, well shaped, blazing scarlet flowers. Quantities of bloom at the first, long blooming season and intermittent bloom thereafter for the rest of the season. Outstanding in every way. \$1.75 each; \$4.50 for 3.

Climbing American Beauty. One of the old-time favorites and always faithful. Large buds and flowers of deep rose-pink. Sweet scented. Stems are long and flowers cover the plant from base to top. Excellent for cutting. \$1.25 each; \$3.30 for 3.

Dr. W. Van Fleet. One of the sturdiest, strongest growing of all the climbers, covered in blooming time with a wealth of long, pointed buds and flowers of a rich, flesh-pink. Stems are long, making this an excellent subject for cutting. The huge quantities of bloom make up for the fact that it is not everblooming. \$1.25 each; \$3.30 for 3.

New Dawn. (Plant Patent No. 1.) Flesh-pink, ever-blooming Dr. Van Fleet. \$2.00 each.

Paul's Scarlet Climber. This old favorite needs no description. Magnificent scarlet, semi-double flowers tell us that the Rose season has really arrived. Strong grower. \$1.25 each; \$3.30 for 3.

Prosperity. Large clusters of medium sized, double white blossoms produced over a long blooming season. Probably the finest of the white climbing Roses. \$1.25 each; \$3.30 for 3.

Flash. (Plant Patent No. 396.) All-America. The most vividly colored Pillar Rose in existence. Striking yellow buds with scarlet suffusion open into a gleaming orange-scarlet. Fragrant. Attractive dark green foliage. \$1.75 each; \$4.50 for 3.

Dr. J. H. Nicolas. (Plant Patent No. 457.) One of the finest of the large flowered everblooming climbers. Deep rose-pink flowers are sometimes 5 or 6 inches across and fully double, having as many as 50 fine-textured petals. Richly fragrant, extremely hardy. Requires practically no trimming as it blooms on the old wood as well as the new. \$1.75 each; \$4.50 for 3.

King Midas. (Plant Patent No. 586.) Has the longest blooming season of any yellow climber. Extremely hardy and disease-resistant. Of rapid growth and flowers lavishly. Lovely, long buds, deep gold touched with red, slowly open to Hybrid-Tea-like flowers of a clear, unfading yellow. We think this is the best of the yellow climbers. \$1.75 each; \$4.50 for 3.

A COLE SUPER SPECIAL

Collection of Superior Patented Climbers
1 Each of Blaze, King Midas, and Dr. J. H. Nicolas
Value \$5.25. **\$4.50**

A COLE SUPER SPECIAL

COLE'S COLOR ROSE GARDEN
Ten different varieties of Everblooming Hybrid Tea Roses. A careful selection of named, 2-year-old plants, all colors. Includes many outstanding favorites listed herein. Our choice of varieties. Each plant labeled.
10 Superb Top Grade Plants \$11.00

A COLE SUPER SPECIAL

COLE'S FAMOUS BARGAIN RAINBOW ROSE OFFER
Spring Shipment Only.

These are 2-year-old, field-grown Hybrid Tea Roses, somewhat lighter than our top grade. The collections are made up of our very finest varieties and will give complete satisfaction in every respect. Assorted, our choice of varieties. Not labeled.

5 Roses \$3.65
10 Roses 5.85
20 Roses 10.75



King Midas

SUPER HARDY FLORIBUNDAS

Rosedom's Most Prolific Creation

Few people realize the value of these exceedingly fine Roses. They will succeed where no others will, both in poor soil and partial shade. They are extremely hardy and do not require winter banking. They are always in blossom, and may be used any place—in shrub borders, in mass planting, as accent in a Hybrid Tea Rose bed. In fact, they are one of the most versatile and usable plants offered in our catalog. Grow 2 to 2½ feet high.

As we definitely believe in mass plantings of these, we are offering non-patented varieties in a collection only.

FLORIBUNDA BEDDING COLLECTION

Eutin. A good light red. **Pink Gruss an Aachen.** Blush-pink.
Ellen Poulsen. Bright rose-pink. **Golden Salmon.** A very popular orange.

4 Lovely Roses (1 of each) for \$4.50

8 Lovely Roses (2 of each) for \$8.75

These varieties sold in collections only.



In addition to this fine collection of the older varieties, we are offering the following new

PATENTED FLORIBUNDA ROSES

Betty Prior. (Pat. No. 340.) Great clusters of red buds open lively red, gradually changing to a delicate shell-pink. A rugged grower, always in bloom. \$1.50 each; \$3.75 for 3.

Donald Prior. (Pat. No. 337.) Many clusters of brilliant, wine-red flowers. Buds are marvelous for cutting. Lustrous, dark green foliage. \$1.50 each; \$3.75 for 3.

Permanent Wave. (Pat. No. 107.) The deep rose-pink flowers are borne profusely and open from artistic buds of a lovely carmine color. Each flower is beautifully waved and crinkled. Dark purplish foliage; sturdy, compact plants. \$1.50 each; \$3.75 for 3.

Pinocchio. (Pat. No. 484.) The word "everblooming" is hardly adequate for this lovely little Rose. The 24-inch plants are always aglow with lovely double flowers. Rich salmon touched with gold in the bud, opening slowly to clear, soft pink exhibition blooms very much like miniature Hybrid Teas. The exotic fruity fragrance is delightful during the long life of the cut blooms. Foliage is rich, dark green and highly resistant to disease. \$1.50 each; \$3.75 for 3.

A COLE SUPER SPECIAL

Regal Collection of All Four Patented Floribunda Roses

Value \$6.00. **\$5.00**



GLORIOUS TREE ROSES

A wealth of glorious bloom just about at eye level! What a different thrill in your garden. Plant in beds with other Roses, along driveways, or as lawn specimens. See how nice the pictured variety looks in conjunction with Cole's Truehedge Columnberry. They're always in blossom with the other Hybrid Teas. Same culture as other Roses, except that the tops must be either wrapped in burlap, or laid down and covered in the winter time.

We offer three finest disease-resistant ALL-AMERICA selections: **Peace** and **Mirandy**, described on page 15, and **Charlotte Armstrong** (Plant Patent No. 455), which has long, streamlined, rich carmine buds opening to extra large, high-centered blooms of brilliant spectrum-red. \$6.00 each; \$15.00 for 3; \$45.00 for 10.



Pinocchio

*Cole's
Finest*

FLOWERING and ORNAMENTAL SHRUBS



Chinese Flame Azalea

Planting Aids. Shrubs like any good fertile garden soil. Acid (sour) soil will not give the best results, but most types do fairly well in it. Azaleas and Blue Hydrangeas **must** have an acid (sour) soil and like plenty of humus. Plant to the depth they have been grown. You can see the soil line on the plants. Spread the roots well and tamp soil around them. Water well. **Never** remove the burlap from balled and burlapped plants. Plant "as is," cutting only top strings after setting. Don't over-water, as most plants don't like "wet feet" any more than humans.

CHINESE FLAME AZALEA

3 to 4 ft. By far the most successful of all Azaleas in the North. Large, showy flowers precede the leaves in the spring and make a never-to-be-forgotten picture with their innumerable shades covering a broad range from light yellow to deep flame-red. (Not available in named colors.) As Azaleas like a somewhat acid soil, a half-and-half mixture of Cole's Acid Peat (see back cover) and soil makes an excellent medium in which to plant them. They are very hardy and will usually do best planted in a partially shaded location.

Specially Priced:

5 to 7 in., \$0.75 each; \$2.00 for 3.
12 to 15 in., 3.00 each; 8.00 for 3.
15 to 18 in., 4.00 each; 11.00 for 3.



BLUE MIST (Caryopteris)

Another lovely new introduction. This is an extremely hardy form of a beautiful southern favorite. It is a real contribution to the meager list of summer and fall flowering shrubs, being covered from August to frost with clusters of powdery blue, fringed flowers. Will grow to 2 or 2½ feet tall in a perfectly rounded mound. In bloom, it gives the effect of a sparkling amethyst set in a silvery green setting. Not too particular as to soil, but does like plenty of fertility. For spring planting only. \$1.50 each; \$4.00 for 3.



BUDDLEIAS Butterfly Bush

A group of new Buddleias with such outstanding beauty and rich coloring that no color picture can do them justice. Their striking, glowing beauty actually attracts butterflies. Huge, long, highly colored spikes of bloom are carried in enormous sprays throughout summer and autumn. All are extremely hardy and will grow about 5 feet tall. Their use in cutting makes them invaluable. All will bloom gloriously the first year. Very easy to grow. Spring planting only.

Charming. Lovely lavender-pink. 2-year plants, 75c each.

Concord. Intense purplish blue. The full luscious color of ripe Concord Grapes. 2-year plants, 75c each.

Dubonnet. Lovely Dubonnet lavender-red. Very strong growth. 2-year plants, 75c each.

Royal Purple. Brand new. A rich, deep, glowing purple, it is absolutely beyond any description. Extra long, very full spikes with close-set flowers. 90c each.

Royal Red. (Plant Patent Applied For.) The newest Buddleia. Finally one that can truly be called red, the color everyone has been waiting for. A real symphony in color. Very hardy. 90c each.



BEAUTY BUSH (Kolkwitzia)

A magnificent specimen flowering shrub, growing to a height of 8 feet, with about the same spread at maturity. Most adaptable and of great beauty. The upright growing branches arch gracefully outward and, during the June blooming season, are weighted downward with lovely pink, bell-like flowers. Extremely hardy and not too particular as to soil conditions. 1½ to 2 ft., \$1.00 each; 2 to 3 ft., \$1.50 each.

A COLE SUPER SPECIAL

3 BUDDLEIAS:

1 Charming
1 Dubonnet
1 Royal Red
Value \$2.40.

\$1.95

5 Superb Buddleias

1 Each of
All Listed Above.

Value \$4.05.

\$3.25



CORALBERRY
(*Symphoricarpos*
Chenaulti)

4 feet. Cascades of foliage, flowers and berries. Fine decorative foliage that lasts well into the winter; blush-pink flowers in the spring, and a wealth of coral-pink berries in the fall and through winter. Does well in shade or sun. Grows anywhere. 2 to 3 ft., \$1.00 each; \$2.50 for 3.

Coralberry

MOCK ORANGE

Cole's Glorious. 8 ft. The huge, glossy white flowers, along with the massive, leathery, glossy green leaves and erect bushy habit of this finest new Mock Orange, make it surpass any other of the type in beauty. It is a sturdy, thrifty grower and is adaptable to almost any position in the garden. 2 to 3 ft., \$1.40 each; 3 to 4 ft., \$1.90 each.

Virginal. 7 ft. The universal favorite of the double white Mock Oranges. Extremely fragrant and floriferous. Very useful for accent planting or in the shrub border. Heavy blooms in June and intermittently throughout the summer. 1½ to 2 ft., \$1.00 each; 2 to 3 ft., \$1.25 each; 3 to 4 ft., \$1.65 each.



Mockorange



FORSYTHIA (Golden Bell)

Spectabilis. 7 ft. Everyone knows this faithful and magnificent plant. It is always sure to bloom, has beautiful foliage and sturdy growing habits. Nothing can surpass its beauty in early spring and is lovely in foliage the rest of the year. 2 to 3 ft., \$1.00 each; 3 to 4 ft., \$1.25 each.

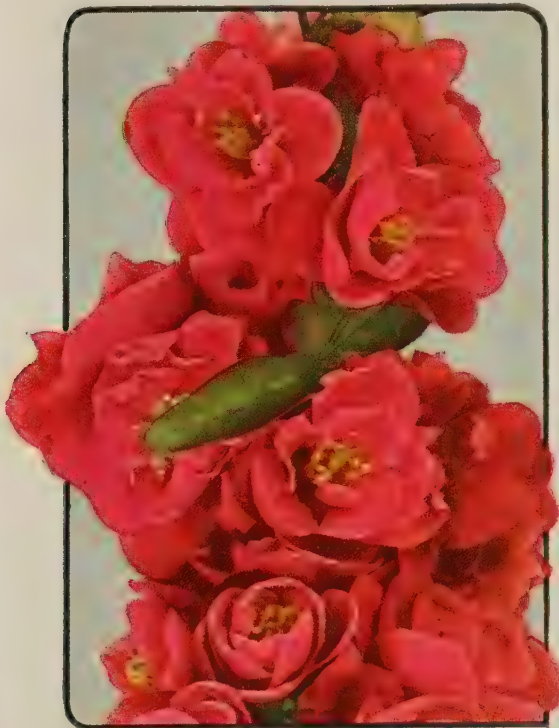
TWO EXTREMELY FRAGRANT SHRUBS

Sweet Shrub (*Calycanthus*). A lovely old favorite sometimes known as Strawberry Bush. The sturdy, reddish brown branches are well furnished with large, leathery, glossy leaves. The unique, double, spicily fragrant flowers are chocolate-red and are borne in huge quantities in early spring. 1½ to 2 ft., \$1.25 each.

Summer Sweet (*Clethra*). Probably the most fragrant shrub of them all. This plant, which grows to a height of 4½ feet, produces a wealth of intensely sweet, spicy white flowers. The blooming season is during the late summer and early fall when little else is in bloom. The plants will grow in almost any location and in any soil, even in shade and moist places. The flowers last well in the house, making them excellent for cutting. 1 to 1½ ft., \$1.00 each; 1½ to 2 ft., \$1.25 each.



Sweet Shrub
(*Calycanthus*)



CRIMSON BEAUTY

Sensational New Double Red Flowering Quince

4½ feet. For many years, horticulturists have been attempting to develop an entirely new and hardy strain of Flowering Quince. We believe that the one we are offering here represents the peak of all efforts. The flowers are of good size and fully double. A marvelous, glowing red-carmine color with attractive yellow stamens peeking through the many petals. This is a compact, bushy, extremely free flowering shrub that is a "must" for every garden. The foliage is a glossy, deep green. The whole plant is a sensational improvement over the older varieties. Husky, 1½ to 2 ft. plants, \$1.75 each; 3 for \$4.75.

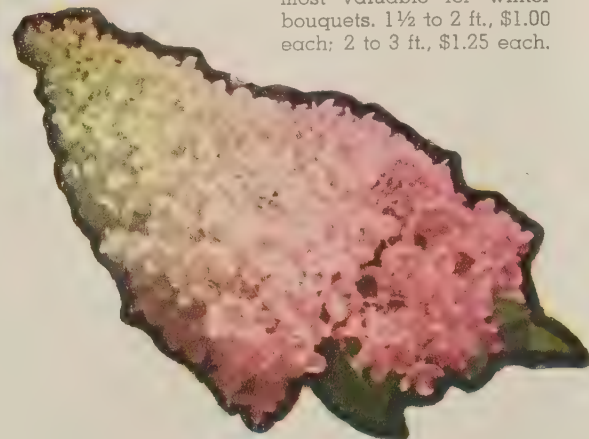


COLE'S NEW BLUE HYDRANGEA

Huge flowers of greenhouse quality, yet hardy outdoors. This is without doubt the very best blue variety. Of course, to maintain the true blue color, an acid soil is necessary. This can be produced by using a half-and-half mixture of Acid Peat Humus and soil when planting. Heavy, 2-year plants, \$1.75 each; \$4.50 for 3.

PEEGEE HYDRANGEA

Another old favorite with its immense, conical, white bloom heads with pink shadings, deepening to pink and red as the flower ages. For largest flowers, prune severely in the spring. Extremely hardy. In bloom in August and September and most valuable for winter bouquets. 1½ to 2 ft., \$1.00 each; 2 to 3 ft., \$1.25 each.



Peegee Hydrangea

GOLDEN SCOTCH BROOM

(*Cytisus Praecox*)

Now you may have growing in your garden a completely hardy shrub, which very much resembles the lovely golden Genista or Easter Flower. Cole's New Golden Scotch Broom is a compact growing shrub that never becomes bare or leggy at the bottom, even when it reaches its ultimate height of 7 feet. Flowers in the early spring and the lovely golden bloom completely covers each plant. It can be trimmed to prevent too tall growing without injuring the flowering quality. The plants bloom at small size. They withstand a light soil, and while not too particular, will do best in a moist, peaty soil. 2-year plants, B&B, \$3.50 each; \$6.50 for 2. The supply is limited, so you better order early.

COLE'S NEW GOLDEN PRIVET

When we speak of Privet, we usually think of hedge plants. Here is a valuable new golden leaved Privet, and, while it could be used as a hedge plant, is of far more value in the shrub border or as a specimen. The leaves are completely golden yellow and the plant gives the lovely golden appearance from the time the leaves open in the spring until they drop in the fall. The plants are quite symmetrical without any pruning and are medium slow growing, reaching an ultimate height of about 4 feet. They will never get rank and out of bounds. Sturdy, 2-year plants, \$2.00 each; \$5.50 for 3.

ROSE-ACACIA (Robinia)

7 feet. Long, graceful clusters of pea-shaped, rose colored flowers are borne on strong, but gently nodding stems in May and June. The plant is not particular as to soil and will grow almost anywhere. Excellent for planting on banks. The foliage is quite decorative, somewhat resembling that of the Wisteria. 2 to 3 ft., \$1.50 each.

VITEX (Chaste Tree)

Macrophylla. The summer-long display of spiked, lavender-blue flowers makes this a most desirable shrub. The large, starlike foliage, with a silvery sheen, is borne on dainty branches. In blossom from late July until September when other flowers are scarce. Heavy, 2-year plants, \$1.25 each; \$3.25 for 3.



Rose-Acacia

DWARF WINGED BURNING BUSH

(*Euonymus Alatus Compacta*)

(Shown in late fall coloring)

A dense, compact shrub growing to 4 feet. A choice and rare variety. Its fall brilliance is almost unbelievable. It is made additionally attractive by its unique, cork-winged bark and the fact that it will do well in either partial shade or sun. 12 to 18 in., \$1.25 each; 2 to 3 ft., \$2.00 each.

As this plant also makes a marvelous hedge, either trimmed or untrimmed, we will be glad to quote special prices on quantity of 50 or more of them. They can be planted 1½ to 2 feet apart for this purpose.



Vitex

HONEYSUCKLE (Lonicera)

Pink Tartarian. 8 ft. Lovely pink blossoms nestle in deep green leaves. A glorious sight in early May and beautiful throughout the late summer and fall with its attractive red berries. This plant may be trimmed to form a lovely hedge or allowed to grow in its natural, tall, symmetrical shape, making an excellent accent for the shrub border. 2 to 3 ft., \$1.00 each; 3 to 4 ft., \$1.25 each.

Zabelli. 6 ft. A marvelous new red Honeysuckle; the most shapely bush of any of the type. Glossy deep green foliage enhances the unsurpassed glowing red flowers, marked with the deep golden yellow stamens. A heavy bloomer and the brilliant red fruits last throughout the summer. No picture could do it justice. As with all Honeysuckles, the fruit is attractive to the birds. 1½ to 2 ft., \$1.00 each; 2 to 3 ft., \$1.25 each; 3 to 4 ft., \$1.50 each.



DAPHNE SOMERSET

(Plant Patent No. 315)

This deliciously fragrant and easily grown new Daphne reaches a mature height of approximately 4 feet. This height is reached in a comparatively short time after planting and the plant then develops a growth as broad as it is tall. While the branches are spreading, the branchlets do not droop. The lovely, deep pink buds open into delightfully scented, star-shaped, blush-pink flowers. It often repeats in the fall. The foliage is a lustrous dark green and is retained throughout most of the winter. This plant is completely hardy and never fails to bloom. 12 to 15 in., \$1.00 each.



Honeysuckle Zabelli

THE SPIREAS

Anthony Waterer. This crimson, everblooming Spirea is a beautiful sight, with its large, flat clusters of crimson flowers against dense, dark green foliage. Is always in bloom throughout the summer and is ideal for foundation planting, a low hedge, or the border. Will withstand considerable shade. 12 to 15 in., 75c each; \$2.00 for 3; \$6.00 for 10. 15 to 18 in., \$1.00 each; \$2.50 for 3; \$7.50 for 10.

Bridal Wreath (Van Houttei). Any description we would give this universal favorite would be superfluous. Excellent for screen plantings, large hedge, or in borders. 1½ to 2 ft., 80c each; \$6.50 for 10; \$13.50 for 25. 2 to 3 ft., \$1.00 each; \$8.00 for 10; \$16.50 for 25. 3 to 4 ft., \$1.25 each; \$10.00 for 10; \$20.00 for 25.

New Everblooming Pink Spirea (Macrothyrsa). This is without doubt the finest pink Spirea ever introduced. The enormous spikes of cameo-pink flowers up to 12 inches long, are produced on strong, willowy stems up to 4 feet long. Clusters of secondary spikes follow after cutting and by trimming out old flowers, the plant will bloom all summer. Excellent heavy foliage. 2-3 ft., \$1.25 each; \$3.00 for 3. 3 to 4 ft., \$1.50 each; \$4.00 for 3.

White Spray Spirea (Thunbergii). 4½ ft. A mass of purest white blooms in early spring before the foliage appears. The long arched branches, carrying great sprays of flowers, are excellent for cutting and the dense, elongated foliage is an ornament in the garden at all times. 1½ to 2 ft., 80c each; \$6.50 for 10. 2 to 3 ft., \$1.00 each; \$8.00 for 10.



White Spray Spirea

THE VIBURNUMS

Burkwoodii. Because of its exquisite fragrance, this is often known as the Gardenia-Flowering Viburnum. It makes an excellent shrub, with semi-evergreen foliage, growing to 5 feet. The glossy green, leathery leaves persist until the new foliage comes out in the spring and the quantities of bluish-white flowers make this plant a jewel for every garden. 1½ to 2 ft., B&B \$3.50 each; \$6.50 for 2.



Dwarf Winged Burning Bush—Shown in Late Fall Coloring

Roundleaf Viburnum. 8 ft. One of the finest in the family, bearing heavy, leathery leaves almost round and measuring about 3 to 3½ inches long. The white flowers are borne in cymes about 4 inches across and are followed by attractive red fruit that turns to a glossy bluish black and persists well into the winter. It blooms earlier than most of the Viburnums and is always a compact, desirable shrub for the border or for accent planting. Will withstand light shade. 2 to 3 ft., \$1.50 each.



New Everblooming Pink Spirea

America's Finest LILACS

(Syringa)

The loveliest forms of this universal garden favorite. Fine foliage; entrancing flower colors.

Everblooming Daphne-Lilac. Lovely clusters of rosy buds open to well formed clusters of pink and lilac flowers. The fragrance is delicious. The plants bloom heavily in May and June and then at intervals all summer. It is a gracefully compact shrub, growing to a height of about 6 feet with dainty foliage thickly set on the stems. An outstanding plant in our nursery that certainly should be in every garden. 1½ to 2 ft., \$1.50 each; 2 to 3 ft., \$2.00 each; 3 to 4 ft., \$2.50 each.

COLE'S PEERLESS FRENCH HYBRID LILACS

Again we offer a group of outstanding varieties.

Belle de Nancy. Double; satiny pink.

Gaudichaud. Double. Great clusters of mammoth, deep lilac florets.

Gloire de Lorraine. Double; blue.

Michael Buchner. Double; mauve.

La Tour d'Auvergne. Double; deep red.

Pink Hyacinth. Huge clusters of fragrant, double pink flowers.

Prices All Varieties:

1½ to 2 ft., \$1.25 each; 2 to 3 ft., \$1.50 each.

A COLE SUPER SPECIAL

All 6 New Hybrids—1 Each:

1½ to 2 ft. Value \$7.50. **\$6.00**

2 to 3 ft. Value \$9.00. **\$7.50**



Lilacs

FLOWERING and ORNAMENTAL TREES

Chosen for beauty of foliage as well as flower and excellence of growth habits. A necessity in your garden picture. May be used as lawn specimens or massed effects. Most of those listed are suitable for smaller city lots as well as for larger estates.

Cultural Hints: Plant in same manner as used for shrubs. Always dig the hole "too large." Prune **more** than you think necessary. Flowering Cherries and Magnolias will not stand wet spots. Willows and Birches love them. **For best success, Flowering Trees must be planted in early spring.**

FLOWERING CRABS

Eley's Purple-Leaved Crab. 10 feet. A bouquet of showy, rich red flowers in the spring and a landmark of purple shaded foliage the rest of the summer and fall. One of the most brilliant of the Flowering Crabs. The small fruit is an attractive purplish red. 3 to 4 ft., \$1.75 each; 5 to 6 ft., \$3.50 each.

Rose Flowering Crab (Floribunda). 10 ft. A wealth of exquisite rose colored flowers fully cover the tree in spring. Small, yellow fruits, in generous clusters, follow in the late summer. Exceedingly graceful and colorful. Especially fragrant. 3 to 4 ft., \$1.75 each; 5 to 6 ft., \$3.50 each.

Bechtel's Double Flowering Crab (Ioensis Plena). 10 ft. Huge, roselike, double pink flowers of rare beauty. Symmetrical growth of stiff, pyramidal style. Grows and thrives almost anywhere. 3 to 4 ft., \$2.00 each; 4 to 5 ft., \$3.00 each.

MOUNTAIN ASH (*Sorbus Aucuparia*)

Clusters of flashy orange-red berries in late summer and fall. Large clusters of pure white flowers in spring. Dense, pyramidal growth up to 25 feet. 6 to 8 ft., \$3.75 each; \$7.00 for 2.

Red Flowering Crab (Hopa). 10 ft. One of the loveliest of all varieties. Makes a broadly compact tree, covered in the spring with showy, rose-crimson flowers and a sensation in the fall with its gorgeously tinted red fruits. Free from most pests and really a sensation in the landscape effect. 3 to 4 ft., \$1.75 each; 5 to 6 ft., \$3.50 each.



Mountain Ash

FLOWERING CHERRIES

Nothing is equal to the breath-taking display of their early spring bloom. Have the beauty of Washington's Tidal Basin planting in your own yard. Spring planting only.

Fugenzo (Kofugen). 18 ft. Deep pink, very double flowers. Their exquisite shadings make them resemble small Roses. The foliage has a coppery red cast.

Sekiyama (Kwanzan). 18 ft. Large, double, deep rose-pink flowers. Very vigorous branching habit. A quick growing tree.

Prices Above Varieties:

Thrifty young trees, 3 ft. and up, sure to grow. \$2.50 each; 1 of each for \$4.25.

Heavy, 5 to 6 ft. trees, for those desiring a quicker landscape effect. \$5.50 each; \$10.00 for 2.

SENSATIONAL NEW AUTUMNALIS

12 feet. New Autumn-Flowering Cherry. Handsome, semi-double, lively pink flowers appear liberally in April and again in October. Presents an unsurpassed picture during both its blooming periods. Spring planting only. Thrifty, young, 3-foot trees, sure to grow, \$3.00 each. 5 to 6 ft. trees for quicker landscape effect, \$6.00 each.

NEW DOUBLE PINK WEEPING CHERRY

10 feet. Graceful arching and weeping branches are a solid, glowing mass of dazzling, double dark pink flowers before the leaves appear. An amazingly beautiful sight to behold. 5 to 6 ft., grafted, \$5.25 each.



New Hybrid Golden Chain

NEW HYBRID GOLDEN CHAIN (*Laburnum Vossi*)

No picture can do this extremely lovely plant justice. Its long clusters of pure golden yellow are similar in form to the well known Wisteria, and often reach a length of 18 inches, as many as 6 or 8 on a small twig. Does well in either partial shade or full sun. A show plant all season with its decorative green bark and large, clove-like leaves. 4 to 5 ft., \$3.50 each.

PAUL'S DOUBLE SCARLET HAWTHORN

14 feet. Dense masses of double, scarlet-crimson flowers against lacy, richly green foliage, combined with the irregular, picturesque form of the mature tree, make this one of our most artistic and wanted plants. Even the color of the bare twigs and branches in the winter time is attractive. Sturdy, 5 to 6 ft. trees, \$5.00 each; \$9.50 for 2.



Flowering Cherries at Washington, D. C.



Magnolia Glauca

MAGNOLIAS

Glauca (Sweetbay). 14 ft. The rich, sweet fragrance of the cream and yellow flowers has been recalled by the poets of the ages. The foliage of long, leathery, shining green, bay leaves, forms an ideal background for the large blooms and bright red clusters of seed which follow. A favorite variety because of its rare charm. Spring planting only. 2 to 3 ft., \$3.25 each.

RED BUCKEYE—A Rare Tree

20 ft. The wealth of tropical appearing foliage and the intense, blood-red flower color make this shrubby tree outstanding in any garden. Compact and regular, literally covered in early spring with the showy blossoms. The foliage is an excellent deep green throughout the summer with a magnificent display of gold in the fall. The trees we offer will probably bloom the first year, and will surely create a grand show the second. 2 to 3 ft., \$4.75 each; \$8.50 for 2.

FLOWERING DOGWOOD

Red Flowering Dogwood (Cornus Florida Rubra). 14 ft. Everyone knows this lovely, artistic, sturdy shrub. The surpassing beauty of its single, light red or pink flowers borne in profusion in the spring, is almost beyond description. Spring planting only. 2 to 3 ft., \$3.50 each; 3 to 4 ft., \$5.90 each.

White Flowering Dogwood (Cornus Florida). 18 ft. This, the parent of the Red Flowering Dogwood, resembles the aforementioned, but bears white blooms. The colored foliage in the fall is really a standout and the addition of the bright red berries provides a striking color note late in the fall as well as attractive food for the birds. Both varieties of Flowering Dogwood will do well in partial shade as well as in full sun. 2 to 3 ft., \$2.00 each; 3 to 4 ft., \$3.00 each.



Red Flowering Dogwood



NEW RED-LEAF MAPLE

OSHIU BENI. A new, decided improvement over the common Blood-Leaf Maple. Its ornamental beauty and charm are intensified by the deep, solid red foliage which holds a brilliant shade all summer. The rounded form is densely furnished with leaves to the ground. Its specimen value is unlimited. Spring planting only. 12 to 18 inches, well branched, \$2.50 each; \$4.50 for 2.

NEW PURPLE-LEAF PLUM

Thundercloud. 12 ft. This is without doubt the finest Purple-Leaved Plum ever developed. The foliage is a deep, solid reddish purple throughout, and you will never forget the sight of one of the glorious trees in bloom. The great masses of rosy pink flowers against the barely unfolded reddish purple leaves is most attractive. Effective as a single lawn specimen, in masses as a background for other colored foliage plants, or in the taller part of the shrub border. These small trees will find many places in your planting. Heavy, 4 to 5 ft., well branched trees, \$3.00 each; \$5.50 for 2. 3 to 4 ft., \$2.00 each; \$3.75 for 2.



Oak

A COLE SUPER SPECIAL

SHADE TREES

We offer a group of our finest shade trees. They have all been transplanted and are sturdy specimens with a well formed root system. They should make an excellent addition to any landscape picture. May be used for street planting, garden corners, and backgrounds, or as lawn specimens. All protected by Cole's guarantee listed on page 2, and are of a normal value of from \$3.00 to \$5.00 each. For larger sizes and other varieties, write us for quotations.

American Elm. Familiar; stately. 5 to 6 ft.

Golden Weeping Willow. Perfect for the garden nook. This variety grows in well drained spots or wet, low spots. 5 to 6 feet.

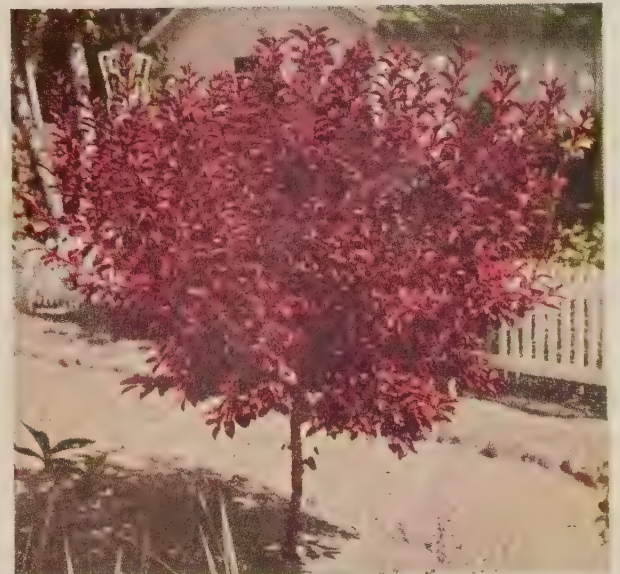
Scarlet Oak. One of our finest shade trees with a showy display of fall foliage. 5 to 6 feet.

Sugar Maple. A grand old, tried and true favorite. 5 to 6 ft.

Sweet Gum. Famous for fall foliage. 4 to 5 ft.

Prices of the Above:

\$2.25 each; any 3 (your selection), for \$6.00.
One each of the above 5 varieties for \$9.50.



New Purple-Leaf Plum

Cole's Selected FRUIT TREES

For several generations the Cole Nursery has specialized in the improvement and production of selected varieties of proven fruitage. Those listed below comprise the best strains for home planting as well as for commercial orchardists. All fruit trees and small fruits are exempt from the Ohio Sales Tax.

Planting Aids. Same general planting methods as for trees and shrubs. Space Apples 35 ft. by 35 ft.; Cherries, Plums, and Apricots 25 ft. by 25 ft.; Pears, Peaches, and Nectarines 20 ft. by 20 ft. Prune heavily after planting. Remember, no wet spots for Cherry trees—they can't take it. Plums will stand the wettest ground of any fruit.



Double Red Delicious



McIntosh

APRICOTS

Spring Planting Only.

Hungarian. A superb variety that has been tested and has borne heavily along the south shores of Lake Erie for a long period. Fruit is large and of excellent quality with deep yellow and gold flesh, of a high sugar content. Trees are very ornamental, having excellent blossoms and often being used in the ornamental border.

4 to 5 ft., 11/16 in. cal. \$2.25 each; \$9.45 for 5
3 to 4 ft., 9/16 to 11/16 in. cal. . . \$1.95 each; \$7.50 for 5
2 1/2 to 3 1/2 ft., 7/16 to 9/16 in. cal. \$1.75 each; \$6.25 for 5

NECTARINE

Spring Planting Only

Smooth, Peach-like fruit without any fuzz whatsoever, having the excellent qualities of a Peach and somewhat the appearance of a large Plum. The fruit is of excellent quality and has a superb melting flavor. Trees are thrifty and bear heavily. 2 1/2 to 3 1/2 ft., 7/16 to 9/16 in. cal., \$1.95 each; \$7.50 for 5.

APPLES

Numbers following the name indicate order of fruit ripening.

Baldwin. (9) Winter. Large, very dark red fruit. Flesh crisp and juicy. Mild and sub-acid flavor. A leading cooking Apple.

Cortland. (3) Fall. Golden yellow overlaid sprightly crimson. White flesh. Fine for cooking and eating.

Double Red Delicious. (6) Said to be the finest of all eating Apples. A winter Apple with crisp, tender, fine grained, juicy flesh.

Grimes Golden. (7) Fine golden eating Apple. An old-fashioned favorite.

Jonathan. (4) Late fall. Brilliant red overlaid with yellow. One of the best in appearance and quality.

Red Northern Spy. (8) Winter. A distinct new type, larger than the old Northern Spy. A bright solid red with juicy, mild, rich flesh. Fine for eating and cooking.

McIntosh. (2) Fall. A beautiful deep crimson fruit of finest quality. White flesh. Tops for cooking and eating.

Stayman Winesap. (11) Winter. Yellow fruit overlaid with a dull red. Good sized fruit that keeps well in storage. An excellent commercial variety that is fine for cooking or eating.

Turley Winesap. (10) Winter. Similar in quality to its companion Stayman Winesap, but with fruit a little larger. One of the best.

Yellow Delicious. (5) Late fall. The same delicate eating qualities as the Double Red Delicious, but the color is a clear yellow. Milder and even better than Grimes Golden.

Yellow Transparent. (1) Summer. Hardy, very productive trees. The best of the early cooking Apples, and when completely ripe, excellent for eating. The leading variety for summer sauce and pies.

Prices of Apple Trees:

5 to 6 ft., 11/16 in. cal. and up \$1.85 each; \$7.75 for 5 (of 1 kind)
4 to 5 ft., 9/16 to 11/16 in. cal. \$1.50 each; \$6.00 for 5 (of 1 kind)

DWARF APPLES

For the family garden where there is not space to have a variety of Standard sized Apple trees, nothing is of more value than the Dwarf Apple trees. These will reach a mature height of from 7 to 8 feet and about equal spread. They will come into bearing 2 to 3 years after planting and are just about as long-lived as the Standard Apple trees. The fruit is absolutely identical to that on the Standard Apple trees, except that quite often it is a little larger and will ripen a little earlier. In addition to producing valuable fruit, these trees are a thing of beauty in the spring. A number of orchardists throughout the country are making plantings of Dwarf Apple trees because of the ease of picking and quickness of coming into bearing. We offer sturdy, thrifty trees, 2 years old, 3 to 4 ft. high, 5/8 in. caliper and up, in the following varieties:

- Jonathan
- McIntosh
- Double Red Delicious
- Stayman's Winesap
- Yellow Transparent

Prices of Dwarf Apple Trees:
\$3.50 each; \$15.00 for 5.



Dwarf Jonathan



New
Seedless
Pear

PEARS

Bartlett. One of the finest. Large, clear yellow fruit with finely grained, juicy flesh. Excellent for canning. September.

Cayuga. A fine new Pear highly recommended by the New York State Experiment Station. Has Seckel's shape, color, and fine grained, delicious flesh, but is much larger, with the size comparing with Bartlett. October.

Clapp's Favorite. This delicious Pear resembles Bartlett in color and quality of flesh, but ripens about two weeks earlier. It is the

largest of the early Pears and is yellow with a dull red cheek. The juicy, melting, fine-grained flesh is best if the Pears are picked while still quite firm and allowed to ripen in a cool, dark place. August.

Seckel. The Sugar Pear. Standard for excellent quality. The finest flavor of all Pears. Medium to small sized fruits are a rich, yellowish brown with pink cheek and have a spicy, honey flavor. The very best for pickling and preserving. October.

Prices of Above Pears:

5 to 6 ft., 11/16 in. cal. and up \$2.25 each; \$9.25 for 5 (of 1 kind)
4 to 5 ft., 9/16 to 11/16 in. cal. \$1.75 each; \$7.50 for 5 (of 1 kind)

New! Seedless Pear

(Plant Patent Applied For.)

While this Pear resembles the Bartlett in shape, size and color, it possesses many qualities which the Bartlett does not have. Being **seedless and coreless**, there would, naturally, be no core-rot, so prevalent among other varieties. Shows great resistance to the fatal fire blight and other weaknesses. Ripens 10 days later than Bartlett. Delicious, sprightly flavor.

	Each	5
5 to 6 ft., 11/16 in. cal. up	\$2.50	\$11.00
4 to 5 ft., 9/16 to 11/16 in. cal. . . .	2.25	9.25
DWARF SEEDLESS PEAR:		
3 to 4 ft., 2-year trees	3.50	15.00

Dwarf Pears

As is often the case with Apple trees, many of our home gardens do not have the room for full-sized Pear trees, still the family desires to have Pears of several varieties, so we offer for this type of planting, the Dwarf Pear trees, which occupy less than half the space of the normal tree. They also have the advantage of bearing a year or so earlier, often producing quite a crop two or three years after planting. The varieties offered are:

Bartlett. Fine, 3 to 4 ft., 2-year trees, \$12.50 each; \$12.50 for 5.

Seckel. Fine, 3 to 4 ft., 2-year trees, \$3.00 each; \$12.50 for 5.

New Seedless. Fine, 3 to 4 ft., 2-year trees, \$3.50 each; \$15.00 for 5.

CHERRIES

Spring Planting Only.

Black Tartarian. Sweet. The best of the early sweet Cherries for home and local market. Very large black-red, juicy, rich fruit. A robust, disease-resisting tree.

Napoleon (Queen Anne). Large, pale yellow, almost white fruit with brilliant red cheek. Flesh is white, firm, juicy, sweet and of the highest quality. A very choice canning variety.

Prices of Above Two Cherries:

4 to 6 ft., 11/16 in. cal. \$2.50 each; \$11.00 for 5 (of 1 kind)
3½ to 5 ft., 9/16 to 11/16 in. cal. \$2.25 each; \$ 9.75 for 5 (of 1 kind)
Montmorency. Sour. Most popular sour Cherry. Large red fruit; firm, reddish yellow flesh. Abundantly productive. Pleasantly tart.
4 to 5 ft., 11/16 in. cal. \$2.25 each; \$9.25 for 5
3 to 5 ft., 9/16 to 11/16 in. cal. \$1.95 each; \$7.50 for 5

PEACHES

Spring Planting Only

Numbers following the name indicate order of fruit ripening.

Cumberland. (3) The finest flavored of all Peaches. Rich, juicy flesh has the lovely creamy color of the well known Champion Peach, with an occasional streak of red. Completely freestone and a thrifty grower and large producer. Every home orchard should have at least one of this variety.

Early Elberta. (1) One of the earlier ripening Peaches having orange-yellow color and red overspread like the Elberta. All Peaches Cole lists are freestone.

Elberta. (5) September. Probably the most popular Peach grown. Highly recommended for canning and shipping. Flesh very yellow, juicy, and firm.

Golden Jubilee. (2) August. Now considered the best early freestone. Skin is yellow blushed red; flesh yellow, juicy, tender and sweet.

Hale-Haven. (4) Due to its high color and packing and shipping qualities, this is fast becoming the leading market Peach. It holds its rich flavor well and loses very little color in canning. Really a leader.

Shipper's Late Red. (7) This excellent variety is particularly valuable for the late market. Large, deep red fruits are produced in good quantity on sturdy, upright trees. Seems to be much more resistant to the Oriental Fruit Moth than other late varieties.

South Haven. (6) Late August. This is one of the finest flavored main crop Peaches. The large yellow fruit has a rich red blotch and the flesh is of the best quality.

Prices of Peach Trees:

3½ to 5 ft., 9/16 to 3/4 in. cal. \$1.50 each; \$6.00 for 5 (of 1 kind)
3 to 4 ft., 7/16 to 9/16 in. cal. \$1.25 each; \$5.00 for 5 (of 1 kind)

PLUMS

Abundance. The best of the Oriental types. A very hardy and productive variety, bearing early. The large, pinkish red fruits are very juicy and sweet and ripen fairly early in the Plum season.

Fellenberg. (Italian Prune.) Good size highly colored purple. Flesh firm, juicy, delicious. Freestone.

Lombard. Medium, violet-red; sweet, rich flavored, hardy and productive. A leading market variety because of its varied uses.

Stanley. A great, new superior Prune which has already become very popular both commercially and in the home orchard. Large fruit, sweet and juicy. Trees hardy and very productive.

Prices of Plum Trees:

5 to 6 ft., 11/16 in. cal. and up \$2.25 each; \$9.25 for 5 (of 1 kind)
4 to 5 ft., 9/16 to 11/16 in. cal. \$1.75 each; \$7.50 for 5 (of 1 kind)



Hale-Haven

COLE'S *Bush and Vine* FRUITS

Planting Aids. Mostly prefer well drained, fertile, sandy loam soils. Grapes will do well in clay. Blueberries need special treatment. (See description.) Use same general planting methods as for shrubs and perennials. Plant in spring only.

The New THORNLESS BOYSENBERRY

The newest development in the most delicious berries you have ever eaten. Prodigious crops of rich, tangy, juicy fruit borne on canes smooth as velvet. New Thornless Boysenberries ripen from ten days to two weeks earlier than the older types. The flavor—a combination of Raspberry, Dewberry and Loganberry, all packed into huge fruits nearly 2 inches long—makes them excellent for pies, canning and desserts. Their high sugar content makes them most desirable during the present day sugar shortage which will probably be with us for several years yet. \$1.25 for 3; \$2.50 for 10; \$5.00 for 25; \$14.00 per 100.

BLACKBERRY

Eldorado. Hardy, highly productive variety with sweet, melting flavor. Huge, jet-black fruit borne in generous clusters. Plant about 3 feet apart. \$1.10 for 5; \$3.00 for 25; \$10.00 for 100; \$35.00 per 500.



RASPBERRIES

New Logan. (Black.) Quantities of immense, glossy black berries. Fruit firm and sweet and very profitable for marketing. Midseason. \$1.15 for 5; \$1.75 for 10; \$3.50 for 25; \$10.50 for 100; \$35.00 for 500.

Latham. (Red.) Probably the most popular of all varieties because of its excellent shipping qualities and hardy, prolific vines. The fruit is a rich, brilliant red and quite resistant to all Raspberry diseases. \$1.25 for 5; \$2.00 for 10; \$4.00 for 25; \$12.00 for 100; \$42.00 for 500.

Taylor. (Red.) The most promising of the new red Raspberries. The large, attractive, high-crowned, bright red berries are borne in great quantities on tall, vigorous, productive vines. The flesh is thick, firm, and of excellent flavor. The picking season is a little longer than the average red Raspberry, making this unusually fine for the home garden. \$1.25 for 5; \$2.00 for 10; \$4.00 for 25; \$12.00 for 100; \$42.00 for 500.



Caco

Niagara

Fredonia

GRAPES

Caco. Delicious large red fruit. Lots of juice, and sturdy skins that make it a most desirable midseason variety. 2-yr., No. 1, 60c each; \$1.50 for 3; \$4.50 for 10; \$15.50 for 50.

Concord Blue. Huge bunches of large, sweet, juicy, deep blue berries borne in prodigious quantities make this the world's favorite blue Grape. The favorite in the market and wine trade. 2-yr., No. 1, 50c each; \$1.20 for 3; \$3.50 for 10; \$13.00 for 50.

Concord Seedless. New. The first successful hardy seedless Grape. The deep blue color of Concord, its good sized berries, delicious flavor and richness, but has few if any seeds. A decided advantage for canning. Concord Seedless should not be planted among other Grapes as cross pollination may cause it to have seeds. 1-yr., No. 1, \$1.00 each; \$2.50 for 3; \$7.50 for 10.

Fredonia. The finest early, fancy, blue-black Grape. A heavy producer with large bunches and large berries. Delightful spicy fragrance and flavor. The vines are hardy and bear at a very young age. An excellent commercial variety. Early midseason. 1-yr., No. 1, 60c each; \$1.50 for 3; \$4.50 for 10; \$15.50 for 50.

Golden Muscat. New. A fancy, large, amber-white Grape with a different, very pleasing aromatic, muscat-like flavor. Generous bunches of large, meaty berries. An excellent keeper and shipper. Late. 1-yr., No. 1, \$1.00 each; \$2.50 for 3; \$7.50 for 10.

Niagara. The finest of all the white varieties. A dependable bearer producing enormous quantities each season. Large, round berries in compact bunches that are exquisitely sweet in flavor and fragrance. 2-yr., No. 1, 55c each; \$1.35 for 3; \$4.00 for 10; \$14.50 for 50.



Taylor Raspberries

Cole's STRAWBERRIES

Will bear next year if planted this spring. Everbearing varieties will bear a late crop the year planted.

Catskill. Large, shapely berries, bright red all the way through to the heart. Rich flavor and aroma. Midseason.

Dorsett. Bright flame-red fruit, fresh and appetizing in appearance. Valuable as a market berry because of its firm flesh and skin. Fine flavor, beautiful shape. Early. Likes heavy soil.

Fairfax. A new, early, glossy dark red variety. Produces a heavy crop of berries, better than average size, conical in shape. Firm, sweetly luscious fruits. Early.

Premier. The king of berries. Very high quality, glossy red fruit of smooth, evenly conical form. It is large and bears the biggest crop of them all. Midseason.

Senator Dunlap. The richest flavor of any Strawberry. Dark red, pointed berries in great abundance. A tremendous yielder, it is great for shipping. Midseason.

Prices of Above Varieties:

\$1.15 for 25; \$1.90 for 50; \$3.00 for 100; \$6.00 for 250;
\$9.50 for 500; \$15.00 for 1000.

Quantity rates apply to full quantity of one variety only.

EVERBEARING STRAWBERRIES

A Continuous Crop in the Home Garden

Gem. One of the big producers of the everbearing group. Comes into bearing soon after the spring planting and is almost continually in fruit until heavy frost. The fall crop is often quite large. Fruits are glossy red and uniformly of good size. Keeps well.

Mastodon. A heavy bearer with fruit of large size and excellent deep red color. Strong grower.

Evermore (Minnesota 1166). A 1945 introduction of excellent quality. Of fine appearance and is unusually sweet and firm and of fine quality. A very heavy bearing variety. When planted in the spring, will produce a fine crop in July and from then until frost in the late fall. The following season, they will fruit with the early June varieties and after a short lay-off will bear continuously for the rest of the season. Berries are a dark red and the flesh is red completely to the center with no green tips or tops.

Prices of the Above Everbearing Varieties:

\$1.90 for 25; \$3.15 for 50; \$5.00 for 100; \$10.00 for 250;
\$15.75 for 500; \$25.00 for 1000.

Quantity rates apply only to full quantity of one variety.

New STREAMLINER

A Continuous Crop in the Home Garden.

This 1946 introduction surpasses anything we have seen. Plants set last spring in our nursery started to bear in early July and were constantly in crop thereafter. Enormous, streamlined berries ripen to a luscious, juicy red all the way through. No sign of any core, green tips or spots. As with the Evermore, the Streamliner in the second year will produce a large crop at the same time as the standard varieties and after a short lay-off will start producing again until frost. The quality is unsurpassed by any Strawberry—either standard or everbearing. \$3.00 for 25; \$5.00 for 50; \$8.00 for 100; \$16.00 for 250; \$25.00 for 500.



Streamliner

RHUBARB

Strawberry. This superb new variety produces good sized stalks of a deep red color and marvelous flavor. When cooked, it becomes a delightful deep pink and requires about one-third less sugar than the average type of Rhubarb. As this variety is grown from divisions (it cannot be produced from seed), it is a little more expensive but will repay in heavy bearing qualities and general excellence. \$1.65 for 3; \$4.50 for 10; \$9.00 for 25.

ASPARAGUS

Mary Washington. (Rust-Proof.) Despite many new introductions, this remains the blue-blood of the Asparagus world. The large, greenish purple stalks are plump and tender. Excellent, full, mild flavor and one of the strongest growers and producers. Strong, 2-year roots, \$2.35 for 25; \$6.00 for 100; \$12.00 for 250; \$18.75 for 500.

New Hybrid Blueberries

Hybrid Blueberries, which are the result of a cross between the ornamental shrub and the wild fruiting varieties, contain all the beauty of the parent plants, produce easier-to-pick fruit of a larger size and more delicious quality than those found in native state. Foliage is lustrous and the plants will grow 4 to 5 feet tall. Bushes produce marvelously and present lively fall color. As these require an acid soil, be sure to procure some of Cole's Acid Peat Humus (see back cover). Try them for your foundation planting, where they will give beauty as well as fruit.

Pioneer. Good sized berries of grand flavor. Attractive, shapely spreading bush.

Rubel. Late. Tall, well shaped bush with attractive foliage. Produces an abundance of slightly tart, high quality berries.

Jersey. Late. Largest berries of good flavor. Medium tall. Fine yield.

Rancocas. Early midseason. Bush tall and well formed. An excellent producer of fine quality, light blue berries.

Prices of Blueberries:

	Each	3	10
2-yr., 12 to 15 in.	\$1.30	\$3.30	\$10.00
3-yr., 15 to 18 in.	1.75	4.50	14.00
3-yr., 1½ to 2 ft.	2.25	6.00	18.00

Quantity rates apply to full quantity of one variety only.

A COLE SUPER SPECIAL

Your choice, 2-yr., 12-15 in. . . \$3.60 \$11.00
Your choice, 3-yr., 15-18 in. . . 4.80 15.00
Your choice, 3-yr., 1½-2 ft. . . 6.45 19.00

Assorted, 6- and 7-year-old Bearing Plants, B&B, our selection . . . 21.00 65.00

MORE THAN ONE VARIETY OF BLUEBERRIES REQUIRED TO CAUSE SUCCESSFUL POLLINATION.



Blue-Leaf Arctic Willow



Truehedge Columnberry

CULTURAL HINTS

Plant in a trench at the depth previously grown. Trim back one-third or more, better two-thirds. Follow same planting methods as for shrubs. Remember—hedges like fertilizer, too.



Teucrium—Midget Hedge

Hedge Plants

BARBERRY (Berberis)

Plant 10 to 12 inches apart.

Green Barbary (Thunbergi). 4 feet. The well known and popular Barbary for general use. Famous for its fine fall effect and bright red berries.

	10	25	100
12 to 15 in.	\$4.00	\$ 8.00	\$28.00
15 to 18 in.	5.00	10.00	36.00
1½ to 2 ft.	6.00	12.00	42.00

Red-Leaved Barbary (Thunbergi Atropurpurea). 4 feet. A beautiful form having distinctive purplish red leaves. Attractive all season. Same growth habits as the Green Barbary. Very useful.

	Each	10	25	100
12 to 15 in.	\$0.60	\$5.00	\$10.00	\$37.50
15 to 18 in.75	6.25	12.50	45.00

Truehedge Columberry. (U. S. Plant Patent No. 110.) The finest of all hedge plants; not too particular as to soil; and the Boxwood-like foliage, combined with the compact, upright form, makes it adaptable to many other uses, particularly in foundation plantings in place of less hardy Arbor-Vitae and Boxwood. It withstands trimming to almost any desired shape and requires only a periodic clipping of the top to form a beautiful, hardy, permanent hedge, of any desired height up to 3½ feet.

	Each	10	25	100
9 to 12 in.	\$0.55	\$4.20	\$ 9.00	\$33.00
12 to 15 in.65	5.00	11.00	40.00
15 to 18 in.80	6.50	14.50	53.00
1½ to 2 ft.	1.00	8.00	17.50	65.00
2 to 2½ ft.	1.20	10.00	22.50	85.00

PRIVET (Ligustrum)

Plant 8 to 10 inches apart.

Amur River. 10 feet. The hardiest of all Privets, growing to a tall, columnar plant with light green foliage. Can be trimmed to any height desired and will always retain its upright form.

	10	25	100
12 to 18 in.	\$2.50	\$5.00	\$17.50
1½ to 2 ft.	3.00	6.00	21.00
2 to 3 ft.	3.50	7.00	25.00

California (Ovalifolium). 8 feet. The most widely used of all Privets, with fine, upright, columnar form and lustrous, deep green leaves. Responds well to desired trimming and remains dense and compact.

	10	25	100
12 to 18 in.	\$2.00	\$4.00	\$14.00
1½ to 2 ft.	2.50	5.00	17.50
2 to 3 ft.	3.00	6.00	21.00

BLUE-LEAF ARCTIC WILLOW

Very dwarf, compact growth. Foliage is of unusual blue-gray-green. Hardy enough to withstand Arctic Circle temperatures. Grows everywhere, even in wet or heavy soils where nothing else will thrive. Creates a beautiful, thick hedge, up to 4 feet tall and can be used favorably as a specimen. Plant 12 to 18 inches apart. 12 to 15 in., \$1.65 for 3; \$4.50 for 10; \$9.25 for 25; \$32.50 for 100.

Teucrium—Midget Hedge

Dense, glossy green foliage that resembles dwarf Boxwood. Shiny dark green leaves last long into the winter and come out again quickly in the spring. Can be sheared to any height up to 12 inches. Aromatic, bright lavender-pink flowers appear in July and August. Very hardy. Plant 6 inches apart in full sun. Well grown plants, \$3.25 for 10; \$6.75 for 25; \$24.00 for 100.

OUR GUARANTEE

We guarantee all plant material to arrive in good, healthy condition. We are unable to consider any complaints made more than ten (10) days after the receipt of and acceptance of plants. We will replace at one-half (1/2) the listed price any plant, shrub, tree, etc. purchased at the listed price that fails to grow the season following planting. Report must be made before August 1st following.

Plants and other nursery stock sent as ordered, and received in good condition, cannot be returned for credit and we accept no obligation for their return.

PLACE
STAMP
HERE

Another Order

From.....

Address.....

To:
THE COLE NURSERY CO.

PAINESVILLE

OHIO

P L A N T S

"Everything That's Good and Hardy"

FRUIT TREES

TREES

EVERGREENS

S H R U B S

WHAT HAVE YOU FORGOTTEN ?

Check your order carefully before mailing.

Additional Order Blanks upon request.

Have you included 5% for postage? (See other side)

Visitors are welcome at our New Home two miles West of Painesville, one mile North of Route 20 on West Jackson Street.



SPREADING
YEWS

(Not
Available)

SAVIN
JUNIPER

(Not
Available)

PURPLE SPREADING
JUNIPER

RHODODENDRON

SILVER-BLUE
PFITZER JUNIPER

UPRIGHT
YEWS

Cole's Justly Famous Junior Size Evergreens

NOT PREPAID

We have offered these well shaped small Evergreens the past four years and they enjoyed such tremendous popularity that we are offering almost the same list this year. Secure a few this spring. Quantities are low and early orders will be given preference, so order now.

Extra husky Evergreens of the desirable varieties. Perfect for immediate use, for setting out to await further maturity, or for planting in window boxes for their decorative effects. These justly famous Junior-size Evergreens are three to four years old, having been twice transplanted to develop masses of fibrous roots. They will quickly become sizeable specimens—doubling and tripling in value. Evergreens can be easily kept to less than half their mature height by judicious pruning. Sent packed in moss. For quantities less than two each, see collection offer below.

	Mature Height	Per 2	Per 5	Per 10
Irish Juniper. 12 to 15 in.	6 ft.	\$1.90	\$4.25	\$8.00
Pfitzer Juniper. 12- to 15-inch spread	4 ft.	1.90	4.25	8.00
Purple Spreading Juniper. 9- to 12-in. spread.	1 ft.	1.90	4.25	8.00
Savin Juniper. 12- to 15-inch spread	4 ft.	1.90	4.25	8.00
Colorado Blue Spruce. 7 to 10 in.	40 ft.	1.90	4.25	8.00
Hicks' Yew. 10 to 12 in.	7 ft.	2.10	4.75	9.00
Spreading Yew. 10- to 12-inch spread	5 ft.	2.10	4.75	9.00
Upright Yew. 10 to 12 in.	8 ft.	2.10	4.75	9.00
Dark Green American Arbor-Vitae. 10 to 12 in.	7 ft.	1.90	4.25	8.00
Pyramidal Arbor-Vitae. 12 to 15 in.	18 ft.	1.90	4.25	8.00
Siberian Arbor-Vitae. 10 to 12 in.	7 ft.	1.90	4.25	8.00
Woodward Globe Arbor-Vitae. 10 to 12 in. ...	3 ft.	1.90	4.25	8.00

A COLE SUPER SPECIAL

MAKE UP YOUR OWN EVERGREEN COLLECTION

10 plants, your choice of varieties, at double the price for 5.
20 plants, your choice of varieties, at double the price for 10.
You may select the kind of plants you want and the number of each kind you want and may even order one each of all varieties at this special rate.

SPECIAL OFFER CATAWBA RHODODENDRONS Beautiful Lavender-Pink Blooms

Healthy plants, 12 to 15 inches, grow to 5 feet. \$1.90 for 2; \$4.25 for 5; \$8.00 for 10.

NEW SILVER-BLUE PFITZER JUNIPER

(Plant Patent Pending)

The outstanding Evergreen introduction of recent years. Broadly compact plants are an intense, silver-blue color that attracts attention even when placed among other blue colored Evergreens. The same shadings are retained throughout the winter. Use it in foundation planting or as a lovely sheared specimen. Trim it to formal shape, or allow it to grow naturally, in its informal, but compact shape. The plants are perfectly hardy and will thrive in light shade.

Cole offers a limited quantity of husky, 10- to 12-inch plants, carefully packed for successful transplanting. \$1.50 each; \$4.00 for 3.



DARK GREEN AMERICAN
ARBOR-VITAE

SIBERIAN
ARBOR-VITAE

PYRAMIDAL
ARBOR-VITAE

IRISH
JUNIPER

HICKS'
YEWS

(Not
Available)

WOODWARD
GLOBE ARBOR-VITAE

PFITZER
JUNIPER

MAKE *Big Profits*

FROM THAT VACANT LOT By Raising **EVERGREENS**

Excellent Investment • Quick Returns



COLE'S "Home Nursery" EVERGREENS

Not Prepaid

Will grow in 2 to 3 years to the finished landscape sizes such as we now offer and sell from our complete price list at an average price of \$6.00 each.

48¢ each in lots of 50 or more of one variety.

55c each in lots of 20 to 50 of one variety.

NOTE THE LARGE SIZES OF THESE ESTABLISHED PLANTS

- Plume Cypress. 6 to 9 inches.
- Golden Plume Cypress. 6 to 9 inches.
- Dwarf Golden Plume Cypress. 6 to 9 inches.
- Irish Juniper. 6 to 9 inches.
- Koster Spreading Juniper. 6- to 9-inch spread.
- Pfitzer Juniper. 6- to 9-inch spread.
- Purple Spreading Juniper. 6- to 9-inch spread.
- Von Ehron Juniper. 6- to 9-inch spread.
- Dwarf Yew. 4 to 8 inches.
- Hicks' Yew. 5 to 8 inches.
- Spreading Yew. 5- to 8-inch spread.
- Upright Yew. 5 to 8 inches.
- Dark Green American Arbor-Vitae. 6 to 9 inches.
- Pyramidal Arbor-Vitae. 6 to 9 inches.
- Siberian Arbor-Vitae. 6 to 9 inches.
- Woodward Globe Arbor-Vitae. 5 to 8 inches.

TRIAL OFFER

50 Evergreens—10 each, your choice of 5 varieties for \$27.50.

Plants Like These in Two or Three Years

READY SALE — HUGE DEMAND

Cole's "Home Nursery" Evergreens sell on sight. Your neighbors and others will quickly purchase when offered, effecting a saving to them of transportation cost and insuring fresh dug stock. Average value increased \$2.00 and more per plant each year. A real hedge against inflation. A tremendous post-war demand being built up.

EASILY GROWN — DISEASE FREE

Have healthful fun in your spare time planting, cultivating and developing these plants into specimens. Simple, complete, fool-proof instructions furnished with each order. Plants guaranteed disease-free and in perfect condition. Cole's "Home Nursery" Evergreens have been transplanted and properly started for continued thriftiness and vigor in your garden. Just like our famous Junior-size Evergreens, but slightly smaller.

SPACE REQUIRED — SOIL, ETC.

When ordering, reserve six (6) square feet per plant. (Plant in 3-foot rows, 2 feet apart.) Any good, well drained soil will do. Grow best in full sun.

PLANT GENEROUSLY — REAP THE HARVEST

It takes little work to plant 100 Evergreens with almost certain profits to you of \$400.00 in three years. It is not much work to grow 500 Evergreens (3 years' profits, \$2,000.00), with prospects of \$1,000.00 per year additional if grown longer. We offer these in lots of 20 or more plants of a kind as it is not economically practicable to cultivate and market any fewer. Last year was the first time we ever released any of our choice nursery planting material to the public. Our surplus was rapidly taken. Order now, as our stock will again deplete rapidly.

COLE'S ACID PEAT HUMUS MIXTURE

For Blueberries, Rhododendrons, Broad-Leaved Evergreens, etc. A requisite for successful growing. In planting, use following mixture:

Blueberry Culture. Three-quarters Cole's Peat, one-quarter soil.

Azaleas, Rhododendrons, Kalmia, Leucothoe, Pieris. One-half each.

Good for lawns and general top dressing.

2-bushel bag, \$1.25; 13-bushel bale, \$6.00.